

THE **JOB PRO**® by **Mi-T-M**®

8650 Enterprise Drive, Peosta IA 52068
563-556-7484 / Fax 563-556-1235

PARTS LIST FOR ***JP-1503/2003-OME1*** ***(AFTER SERIAL #10073267)***

Motor Horsepower:

JP-1503-OME1: 3.0 H.P.

JP-2003-OME1: 4.0 H.P.

Pump Oil Grade:

Mi-T-M Pump Oil #AW-4085-0016

Pump Oil Capacity:

18.5 oz.

Nozzle Size:

JP-1503-OME1: 4.5

JP-2003-OME1: 4.0

This Parts Listing has been compiled for your benefit. You can be assured your Mi-T-M Cold Water Pressure Washer was constructed and designed with quality and performance in mind using over 25 years experience in the pressure washer business. Each component has been rigorously tested to insure the highest level of acceptance.

The contents of this Parts Listing are based on the latest product information available at the time of publication. Mi-T-M reserves the right to make changes in price, color, materials, equipment, specifications or models at any time without notice.

WARNING

THIS IS A PROFESSIONAL HIGH PRESSURE, COLD WATER PRESSURE WASHER. CAUTION SHOULD BE OBSERVED WHEN USING OR REPAIRING THIS UNIT! READ AND FOLLOW THE SAFETY WARNINGS LISTED BELOW BEFORE ATTEMPTING ANY REPAIRS ON THIS PRESSURE WASHER!

SAFETY WARNINGS

1. NEVER alter or modify the equipment. Be sure any accessory items and system components being used will withstand the pressure developed. Use only genuine Mi-T-M parts for repair of your pressure washer. Failure to do so can cause hazardous operating conditions and will VOID warranty.
2. NEVER make adjustments on machinery while the unit is connected to the engine without first removing the ignition cable from the spark plug. Turning over the machinery by hand during adjustment or cleaning might start the engine and machinery with it, causing serious injury to the operator.
3. Know how to stop and bleed pressures quickly. Be thoroughly familiar with controls.
4. Before servicing the unit, turn unit off, relieve the water pressure and allow the unit to cool down. Do not make repairs while the unit is running. Service in a clean, dry, flat area. Block the wheels to prevent the unit from moving. Be especially careful to properly dispose of any flammable materials.
5. After testing the machine, DO NOT leave the pressurized unit unattended. Shut off the unit and release trapped pressure before leaving.

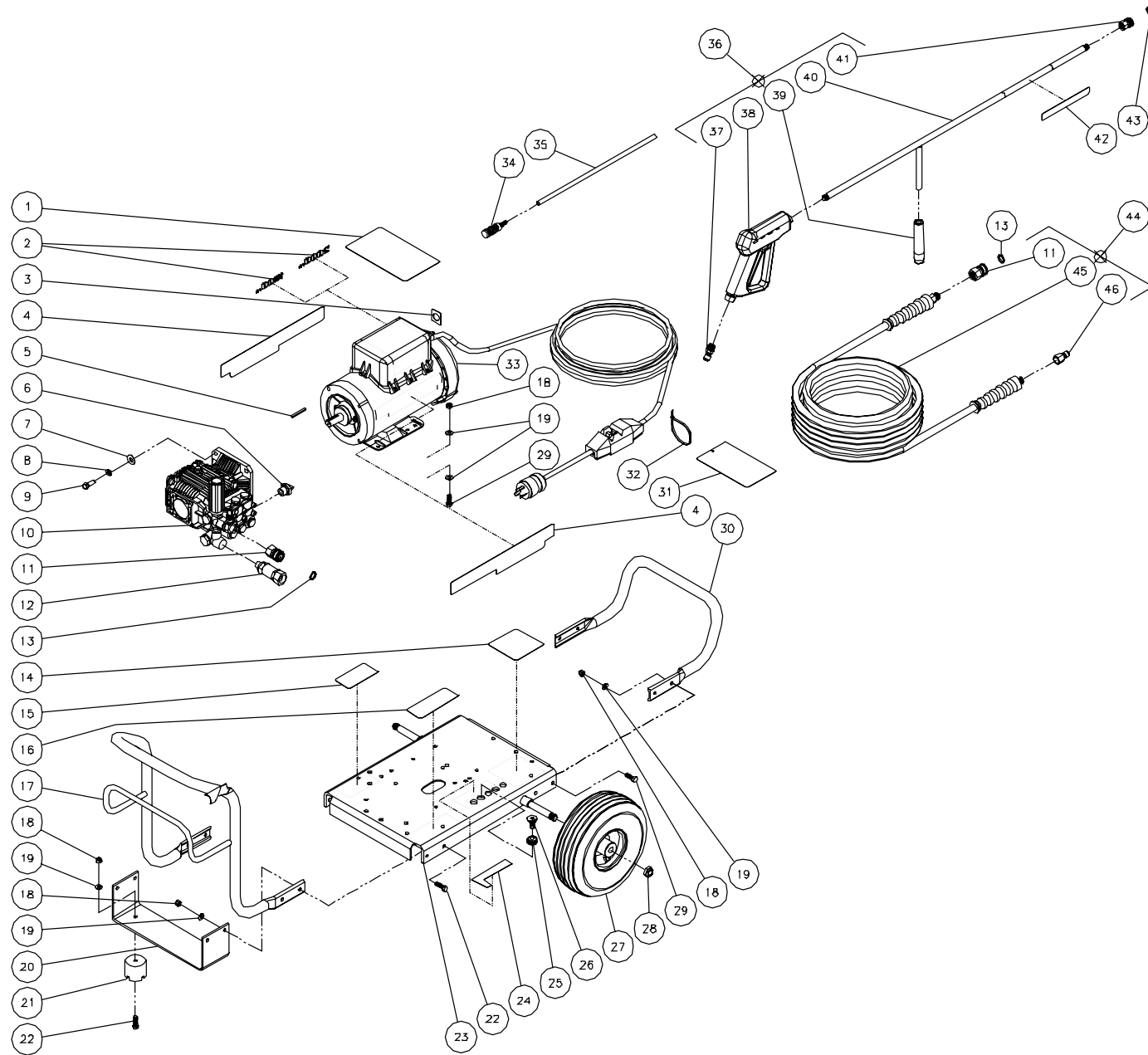
Table of Contents

SPECIFICATIONS	3
FRAME ASSEMBLY FOR JP-1503/2003-0ME1 (AFTER SERIAL #10073267)	4
MOTOR ASSEMBLY (851-0342)	6
MOTOR ASSEMBLY (851-0343)	8
PUMP ASSEMBLY (3-0205)	10
UNLOADER ASSEMBLY (8-0456)	12
GUN ASSEMBLY (16-0001)	14
WIRING SCHEMATIC/ DIAGRAM FOR JP-1503/2003-0ME1	16
NOTES	17-20

SPECIFICATIONS

MODEL NUMBER	JP-1503-0ME1	JP-2003-0ME1
Operating Pressure (PSI/Bar):	1500/103.4	2000/137.9
High Pressure Nozzle:	4.5	4.0
Water Volume (GPM/lpm):	2.8/10.6	
Motor:	Totally enclosed fan cooled, circuit breaker thermal overload protection, 35ft. power supply cord with Ground Fault Circuit Interrupter (GFCI)	
Horsepower	3.0	4.0
Voltage	230	
Phase	Single	
Amps	11.8	16.0
Pump:	Direct Driven, Oil Bath, Triplex Piston	
Oil Type	Mi-T-M Pump Oil #AW-4085-0016	
Oil Capacity (oz./liters)	14.0/41	
Plungers	Ceramic Coated	
Manifold	Forged Brass	
Valves	Stainless Steel	
Unloader	Adjustable	
Heat Dump Valve	Relieves heated water during unloader bypass stage	
Detergent Injector	Adjustable low pressure down stream from pump	
Unit Net Weight (lbs/Kg)	117/52	
Unit Shipping Weight (lbs/Kg)	156/71	
Unit Net Dimension (in/cm)	38Lx21Wx21H/96.5Lx53Wx53H	
Unit Shipping Dimension (in/cm)	40Lx26Wx33H/101Lx66Wx83H	

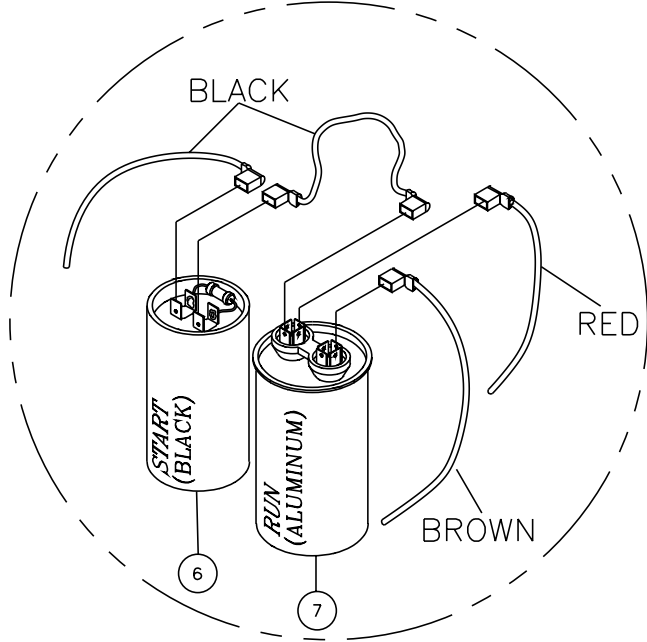
FRAME ASSEMBLY FOR JP-1503/2003-0ME1 (AFTER SERIAL #10073267)



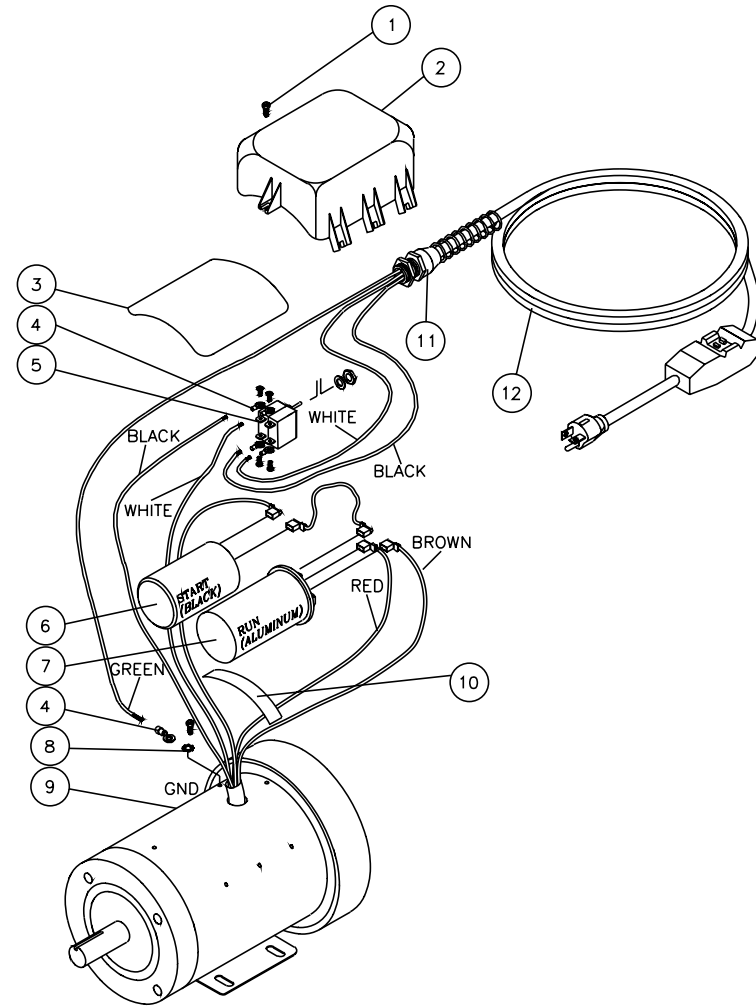
JP-2003-0ME1-021203-DLG

FRAME ASSEMBLY FOR JP-1503/2003-0ME1 (AFTER SERIAL #10073267)							
REF. #	DESCRIPTION	PART #	QTY.	REF. #	DESCRIPTION	PART #	QTY.
1	Decal- Warning: Risk of Electrocutation (E/S)	34-1013	1	26	Nozzle- 2504.5 (JP-1503-0ME1)	18-0060	1
2	Decal- Die Cut 1500 (JP-1503-0ME1)	34-1401	1	-	Nozzle- 0004 (JP-2003-0ME1)	18-0028	1
-	Decal- Die Cut 2000 (JP-2003-0ME1)	34-0771	1	-	Nozzle- 1504 (JP-2003-0ME1)	18-0029	1
3	Decal- On/Off	34-0612	1	-	Nozzle- 2504 (JP-2003-0ME1)	18-0030	1
4	Decal- Job Pro	34-0777	2	-	Nozzle- 6540	18-0148	1
5	Key	43-0073	1	27	Wheel	14-0017	2
6	Thermal Relief Valve	22-0005	1	28	Nut	30-0117	2
7	Flatwasher	28-0023	4	29	Bolt	27-0067	8
8	Lockwasher	29-0008	4	30	Rear Handle	7-0103A01	1
9	Bolt	27-0117	4	31	Hang Tag: Warning: Risk of Electrocutation (E/F/S)	34-1035	1
10	Pump	3-0205	1	32	Cable Tie	33-0022	1
11	Quick Connect Socket	17-0004	2	33	Motor- 3.0 H.P. (JP-1503-0ME1)	851-0342	1
12	Inlet Filter	19-0206	1	-	Motor- 4.0 HP (JP-2003-0ME1)	851-0343	1
13	O-ring	25-0123	2	34	Detergent Strainer	19-0050	1
14	Decal- Warning/Caution	34-1015	1	35	Detergent Hose	15-0021	1
15	Decal- Data Plate	N/A	1	36	Gun/Wand Assembly (Inc. 37, 41)	851-0095	1
16	Decal- Warning: Risk of Injection (E/S)	34-1017	1	37	Quick Connect Plug	17-0005	1
17	Front Handle	7-0100A01	1	38	Gun	16-0001	1
18	Locknut	30-0157	14	39	Grip	7-0002	1
19	Washer	28-0003	18	40	Wand	16-0120A01	1
20	Underbracket	13-0002A01	1	41	Quick Connect Socket	17-0001	1
21	Isolator	14-0008	2	42	Decal- Warning: Risk of Injection (E/S)	34-1253	1
22	Bolt	27-0068	6	43	O-ring	25-0122	1
23	Baseplate	5-0184A01	1	44	Pressure Hose Assembly (Inc. 11, 45-46)	851-0007	1
24	Decal- Nozzles	34-0500	1	45	Presssure Hose	15-0003	1
25	Grommet	33-0002	5	46	Quick Connect Plug	17-0006	1
26	Nozzle- 0004.5 (JP-1503-0ME1)	18-0033	1	*Must Order in One Foot Lengths			
-	Nozzle- 1504.5 (JP-1503-0ME1)	18-0039	1				

MOTOR ASSEMBLY (851-0342)



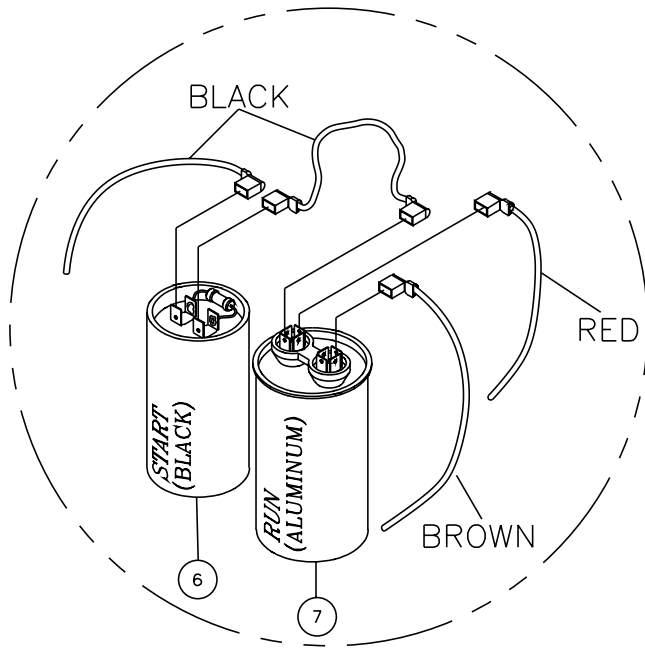
CAPACITOR TERMINAL ASSEMBLY



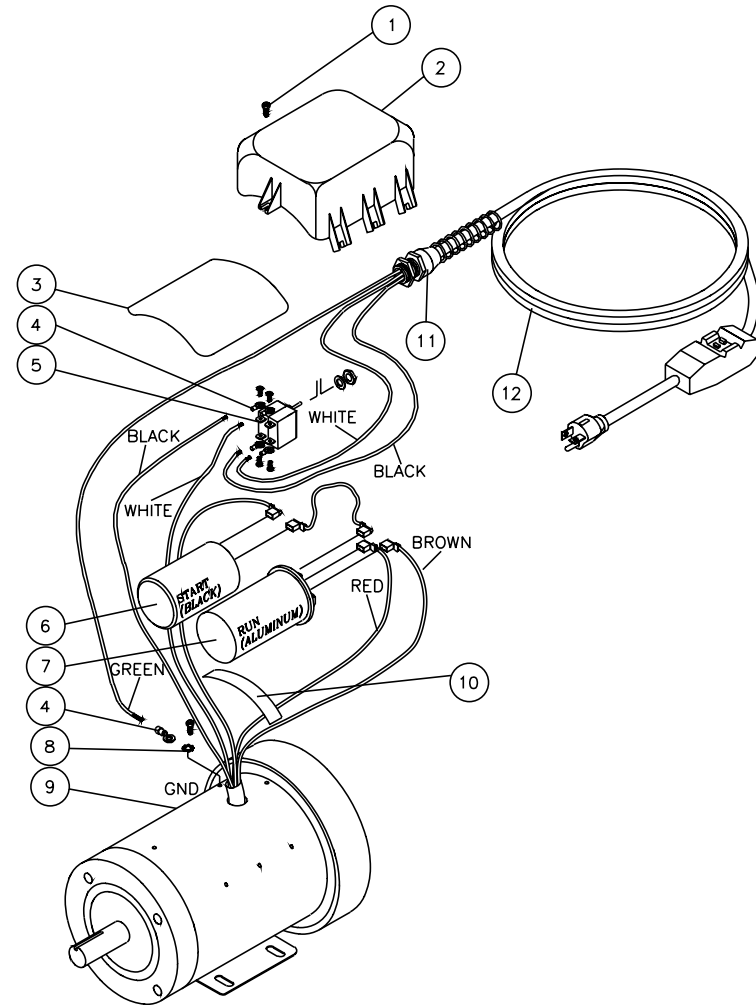
851-0342-081303-DLG

MOTOR ASSEMBLY (851-0342)			
REF. #	DESCRIPTION	PART #	QTY.
1	Screw	27-8389	8
2	Motor Box	52-0041A01	1
3	O-ring	25-0338	1
4	Terminal Ring	32-0002	4
5	Switch- 15 AMP	32-0351	1
6	Capacitor- Start w/Motor	32-0449	1
7	Capacitor- Run w/Motor	32-0450	1
8	Terminal Fork	32-0034	1
9	Motor- 3.0 H.P.	2-0087	1
10	Motor Box Strap	52-0042	1
11	Strain Relief	32-0407	1
12	GFCI Cord	32-0333	1

MOTOR ASSEMBLY (851-0343)



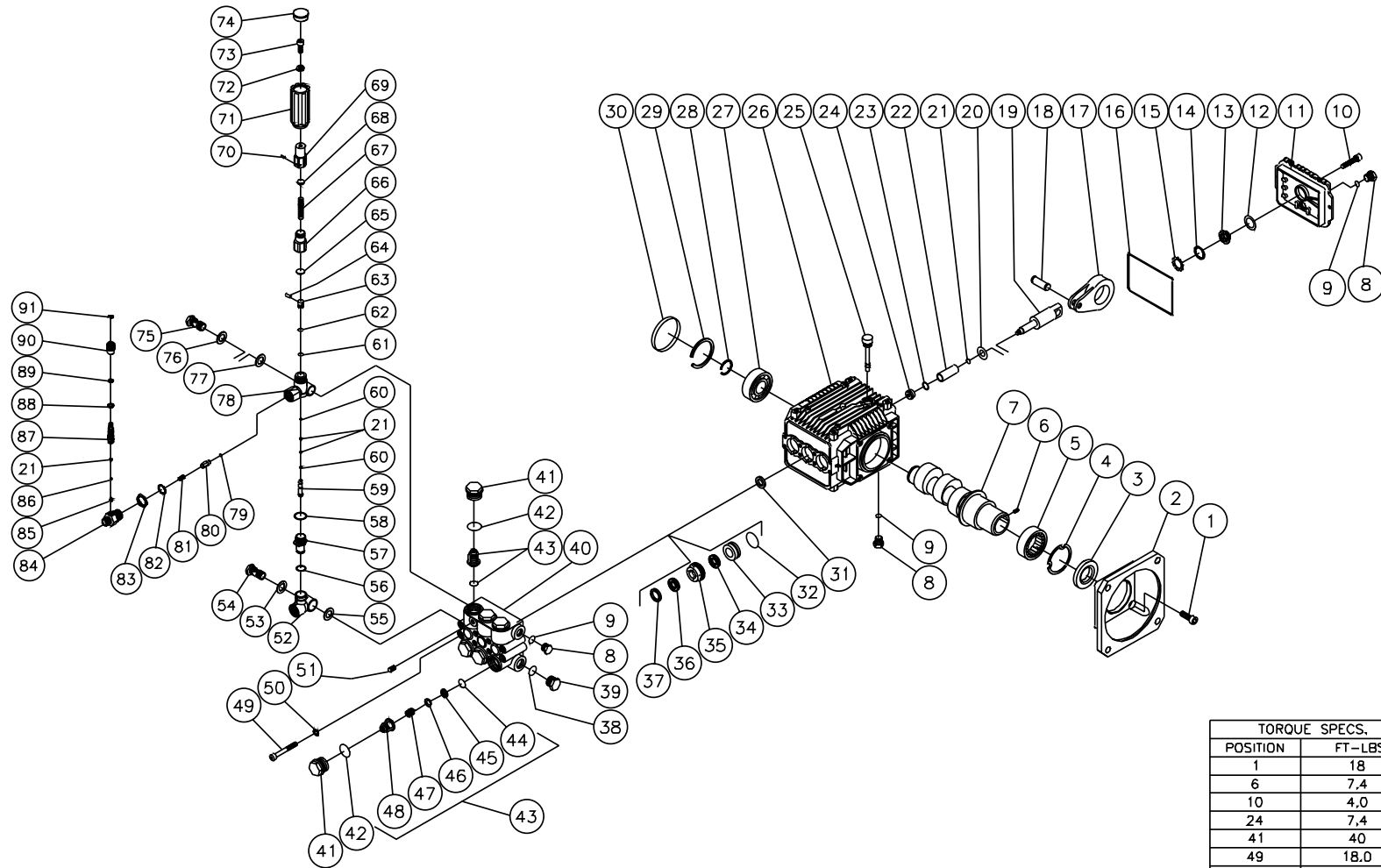
CAPACITOR TERMINAL ASSEMBLY



851-0343-020504-DLG

MOTOR ASSEMBLY (851-0343)			
REF. #	DESCRIPTION	PART #	QTY.
1	Screw	27-8389	8
2	Motor Box	52-0061A01	1
3	O-ring	25-0338	1
4	Terminal Ring	32-0002	5
5	Switch- 20 AMP	32-0687	1
6	Capacitor- Start w/Motor	32-0449	1
7	Capacitor- Run w/Motor	32-0450	1
8	Washer	28-1009	1
9	Motor- 4.0 H.P.	2-0088	1
10	Motor Box Strap	52-0042	1
11	Strain Relief	32-0407	1
12	GFCI Cord	32-0333	1

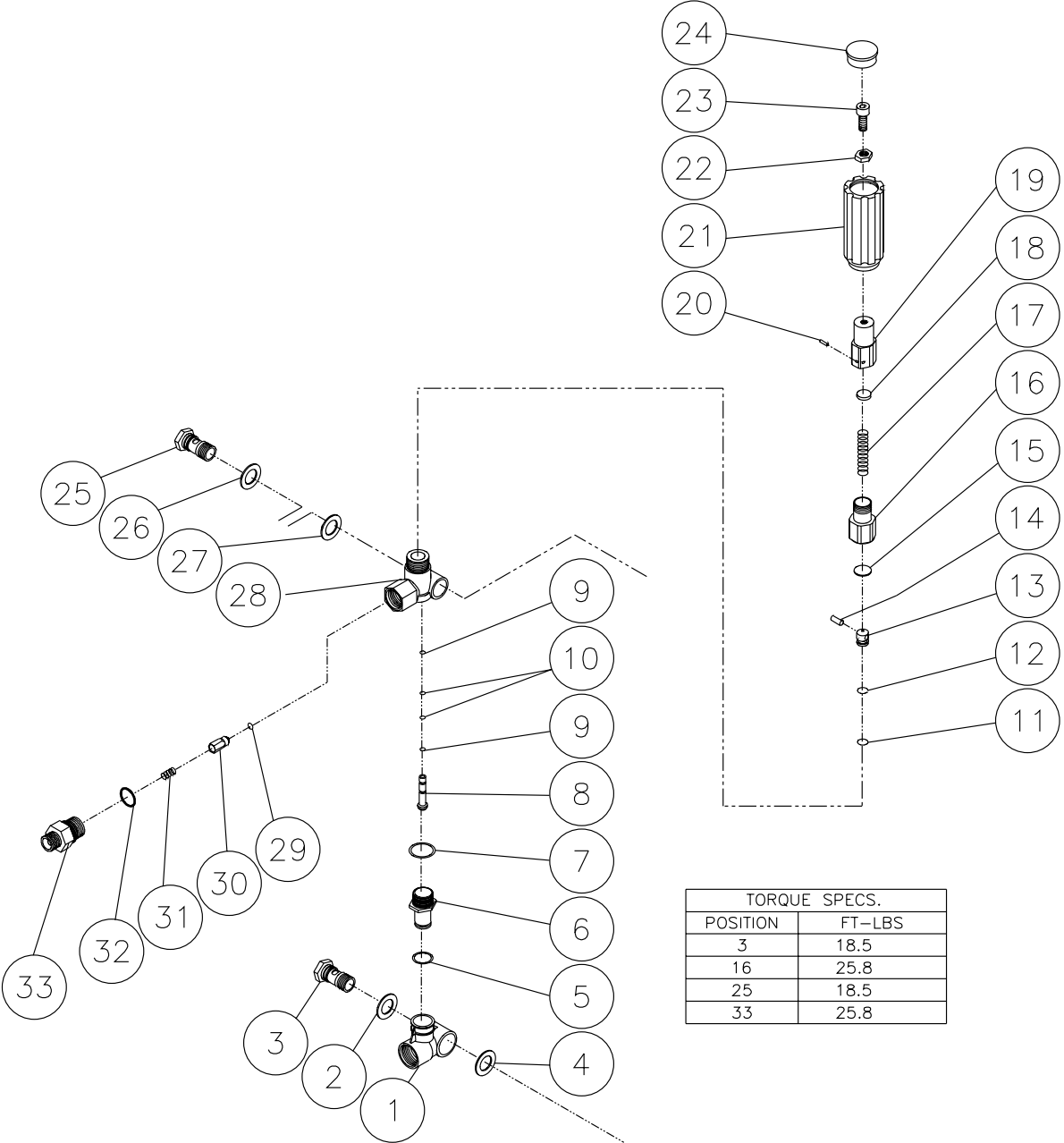
PUMP ASSEMBLY (3-0205)



TORQUE SPECS.	
POSITION	FT-LBS
1	18
6	7.4
10	4.0
24	7.4
41	40
49	18.0
51	11.1
54	18.5
66	25.8
75	18.5
87	2.9

PUMP ASSEMBLY (3-0205)											
REF. #	DESCRIPTION	PART #	QTY.	REF. #	DESCRIPTION	PART #	QTY.	REF. #	DESCRIPTION	PART #	QTY.
1	Bolt	27-8432	4	34	Low Pressure Seal (See 70-0181)	N/A Sep.	3	67	Spring	49-0132	1
2	Flange	46-0827	1	35	Packing Retainer	46-0728	3	68	Spring Button	8-0475	1
3	Oil Seal	26-0192	1	36	V-Packing (See 70-0181)	N/A Sep.	3	69	Adjustment Barrel	8-0476	1
4	Retaining Ring	46-0667	1	37	Support Ring (See 70-0182)	N/A Sep.	3	70	Pin	8-0477	1
5	Bearing	48-0059	1	38	O-ring	25-0372	1	71	Unloader Knob	7-0141	1
6	Set Screw	27-8886	1	39	Plug	39-0088	1	72	Nut	30-3025	1
7	Crankshaft	46-0718	1	40	Manifold	46-0730	1	73	Bolt	27-8433	1
8	Plug	39-0086	3	41	Valve Cap	39-0087	6	74	Cap	7-0142	1
9	O-ring	25-0325	4	42	O-ring	25-0160	6	75	Adapter	8-0448	1
10	Bolt	27-8888	6	43	Single Valve Assembly (Inc. 44-48) (See 70-0161)	N/A Sep.	6	76	Washer	8-0449	1
11	Crankcase Cover	46-0719	1	44	O-ring	25-0386	7	77	Washer	8-0450	1
12	O-ring	25-0370	1	45	Valve Seat (See 70-0161)	N/A Sep.	6	78	Unloader Body	8-0451	1
13	Oil Sight Glass	46-0670	1	46	Valve Plate (See 70-0161)	N/A Sep.	6	79	O-ring	25-0437	1
14	Reflector	46-0824	1	47	Valve Spring (See 70-0161)	N/A Sep.	6	80	Check Valve	8-0454	1
15	Retainer	46-0671	1	48	Valve Cage (See 70-0161)	N/A Sep.	6	81	Spring	49-0123	1
16	O-ring	25-0398	1	49	Bolt	27-8875	8	82	O-ring	25-0372	1
17	Connecting Rod	46-0720	3	50	Lockwasher	29-0153	8	83	Tightener Nut	8-0497	1
18	Piston Pin	46-0721	3	51	Plug	39-0097	1	84	Injector Adapter	8-0498	1
19	Plunger Rod	46-0722	3	52	Inlet Bypass Adapter	8-0437	1	85	Detergent Injector Spring (See 70-0232)	N/A Sep.	1
20	Washer	28-1027	3	53	Washer	8-0440	1	86	Ball (See 70-0232)	N/A Sep.	1
21	O-ring	25-0371	6	54	Adapter	8-0438	1	87	Barb	8-0499	1
22	Piston	46-0723	3	55	Washer	8-0439	1	88	O-ring (See 70-0232)	N/A Sep.	1
23	Gasket	26-0187	3	56	O-ring (See 70-0180)	N/A Sep.	1	89	O-ring (See 70-0232)	N/A Sep.	1
24	Nut	30-6016	3	57	Nipple	8-0441	1	90	Adjustable Detergent Knob	7-0152	1
25	Oil Dipstick	39-0090	1	58	O-ring (See 70-0180)	N/A Sep.	1	91	Snap Ring (See 70-0232)	N/A Sep.	1
26	Crankcase	46-0724	1	59	Piston	8-0442	1		High Pressure Seals Kit (Inc. 3 each 32, 34, 36)	70-0181	
27	Bearing	48-0063	1	60	Back-up Ring (See 70-0180)	N/A Sep.	2		Support Rings Kit (Inc. 3 each 37)	70-0182	
28	Retaining Ring	46-0732	1	61	O-ring (See 70-0180)	N/A Sep.	1		Valve Kit (Inc. 6 each 44-48)	70-0161	
29	Retaining Ring	46-0676	1	62	Back-up Ring (See 70-0180)	N/A Sep.	1		Unloader Kit (Inc. 21, 52-81)	8-0456	
30	Bearing Cap	46-0725	1	63	Poppet	8-0443	1		Unloader Repair Kit (Inc. 21, 56, 58, 60-62, 79)	70-0180	
31	Oil Seal	26-0193	3	64	Pin	8-0444	1		Injector Kit (Inc. 21, 82-91)	70-0232	
32	O-ring	25-0399	3	65	Spring Button	8-0445	1		Injector Repair Kit (Inc. 21, 82, 85, 86, 88, 89, 91)	70-0233	
33	Low Pressure Retainer	46-0726	3	66	Spring Guide	8-0474	1				

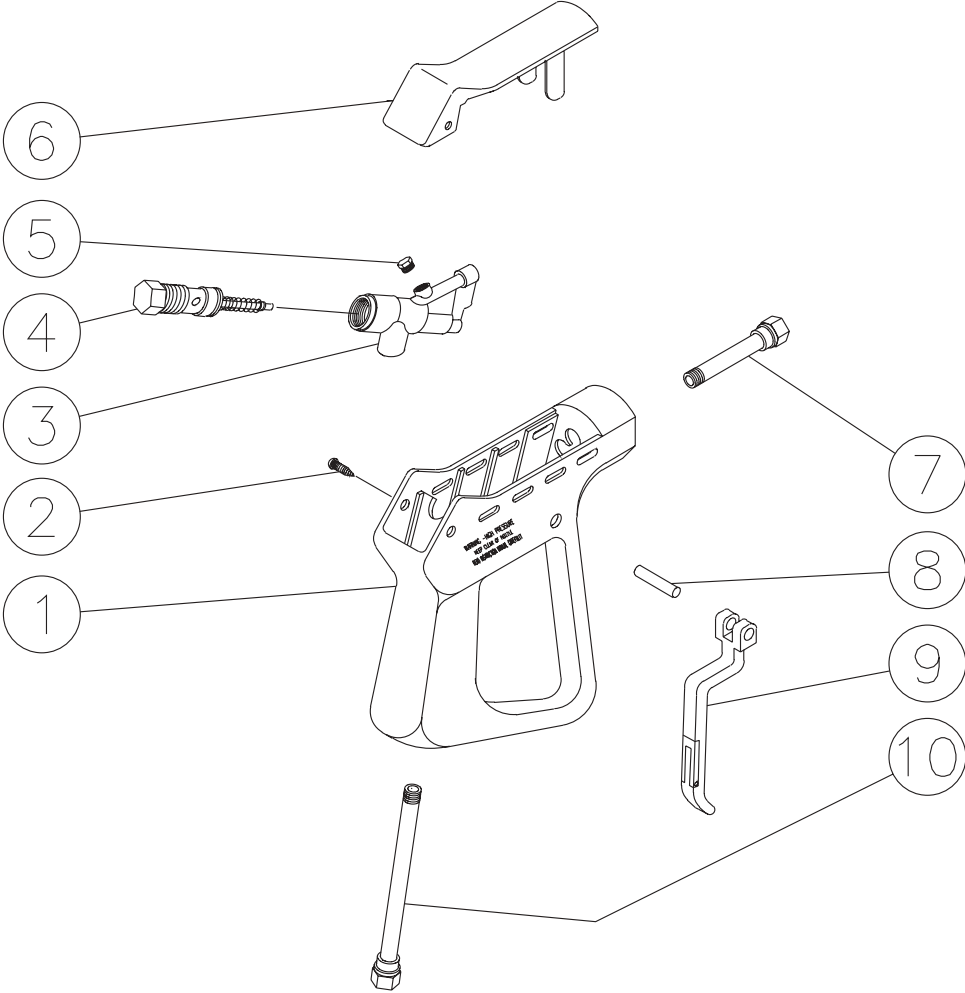
UNLOADER ASSEMBLY (8-0456)



TORQUE SPECS.	
POSITION	FT-LBS
3	18.5
16	25.8
25	18.5
33	25.8

UNLOADER ASSEMBLY (8-0456)							
REF. #	DESCRIPTION	PART #	QTY.	REF. #	DESCRIPTION	PART #	QTY.
1	Inlet Bypass Adapter	8-0437	1	18	Spring Button	8-0475	1
2	Washer	8-0440	1	19	Adjustment Barrel	8-0476	1
3	Adapter	8-0438	1	20	Pin	8-0477	1
4	Washer	8-0439	1	21	Unloader Knob	7-0141	1
5	O-ring (See 70-0180)	N/A Sep.	1	22	Nut	30-3025	1
6	Nipple	8-0441	1	23	Bolt	27-8433	1
7	O-ring (See 70-0180)	N/A Sep.	1	24	Cap	7-0142	1
8	Piston	8-0442	1	25	Adapter	8-0448	1
9	Back-up Ring (See 70-0180)	N/A Sep.	2	26	Washer	8-0449	1
10	O-ring	25-0371	5	27	Washer	8-0450	1
11	O-ring (See 70-0180)	N/A Sep.	1	28	Unloader Body	8-0451	1
12	Back-up Ring (See 70-0180)	N/A Sep.	1	29	O-ring	25-0391	1
13	Poppet	8-0443	1	30	Check Valve	8-0454	1
14	Pin	8-0444	1	31	Spring	49-0123	1
15	Spring Button	8-0445	1	32	O-ring	25-0372	1
16	Spring Guide	8-0474	1	33	Adapter Nipple	24-0159	1
17	Spring	49-0132	1		Unloader Repair Kit (Inc. 5, 7, 10-12, 29)	70-0180	

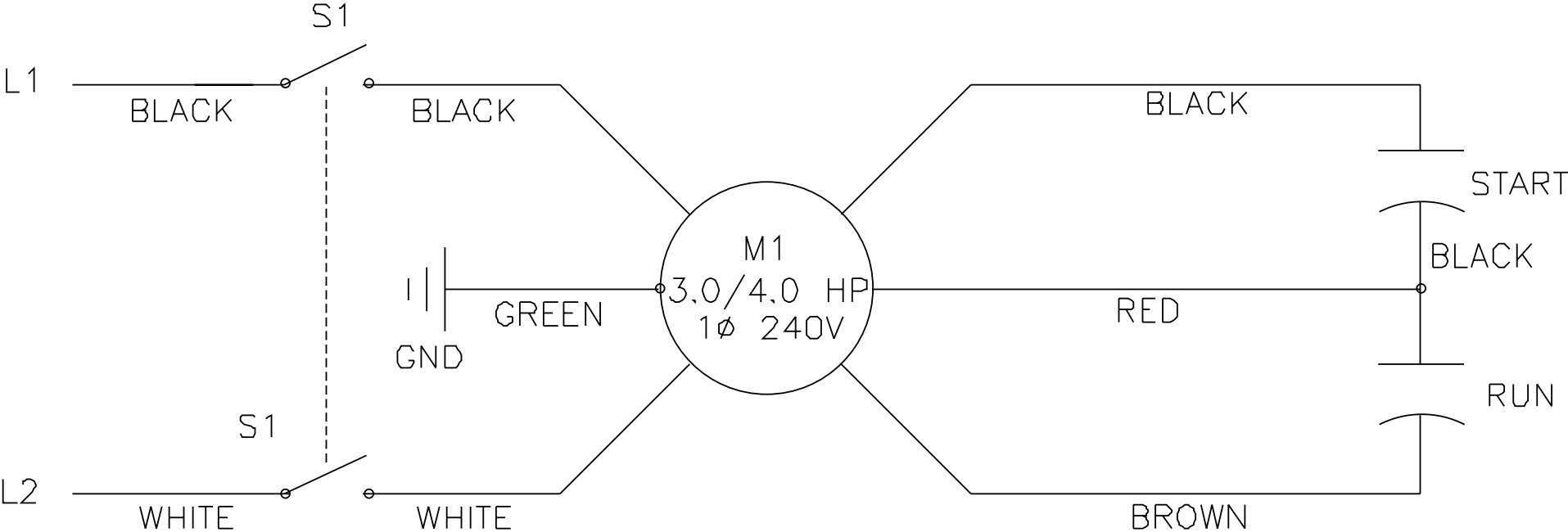
GUN ASSEMBLY (16-0001)



16-0001-110399-RD

GUN ASSEMBLY (16-0001)			
REF. #	DESCRIPTION	PART #	QTY.
1	Plastic Housing	16-0008	1
2	Screw	27-3230	2
3	Brass Housing	16-0012	1
4	Gun Repair Kit	70-0055	1
5	Brass Plug	39-0024	1
6	Plastic Cover	16-0009	1
7	Pipe Assembly	16-0013	1
8	Trigger Pin	16-0063	1
9	Trigger/Safety Lock-off	16-0010	1
10	Pipe Assembly- Inlet	16-0016	1
	Complete Gun Assembly	16-0001	1

WIRING SCHEMATIC/ DIAGRAM FOR JP-1503/2003-0ME1



WIRE DIAGRAM SCHEMATIC
JP-1503/2003-0ME1-050800-EDW

NOTES

NOTES

NOTES

