

Mi-T-M® CORPORATION ■ Peosta, IA 52068

ILLUSTRATED PARTS LIST

FOR PRESSURE WASHER MODEL:

CW-2004-0ME1

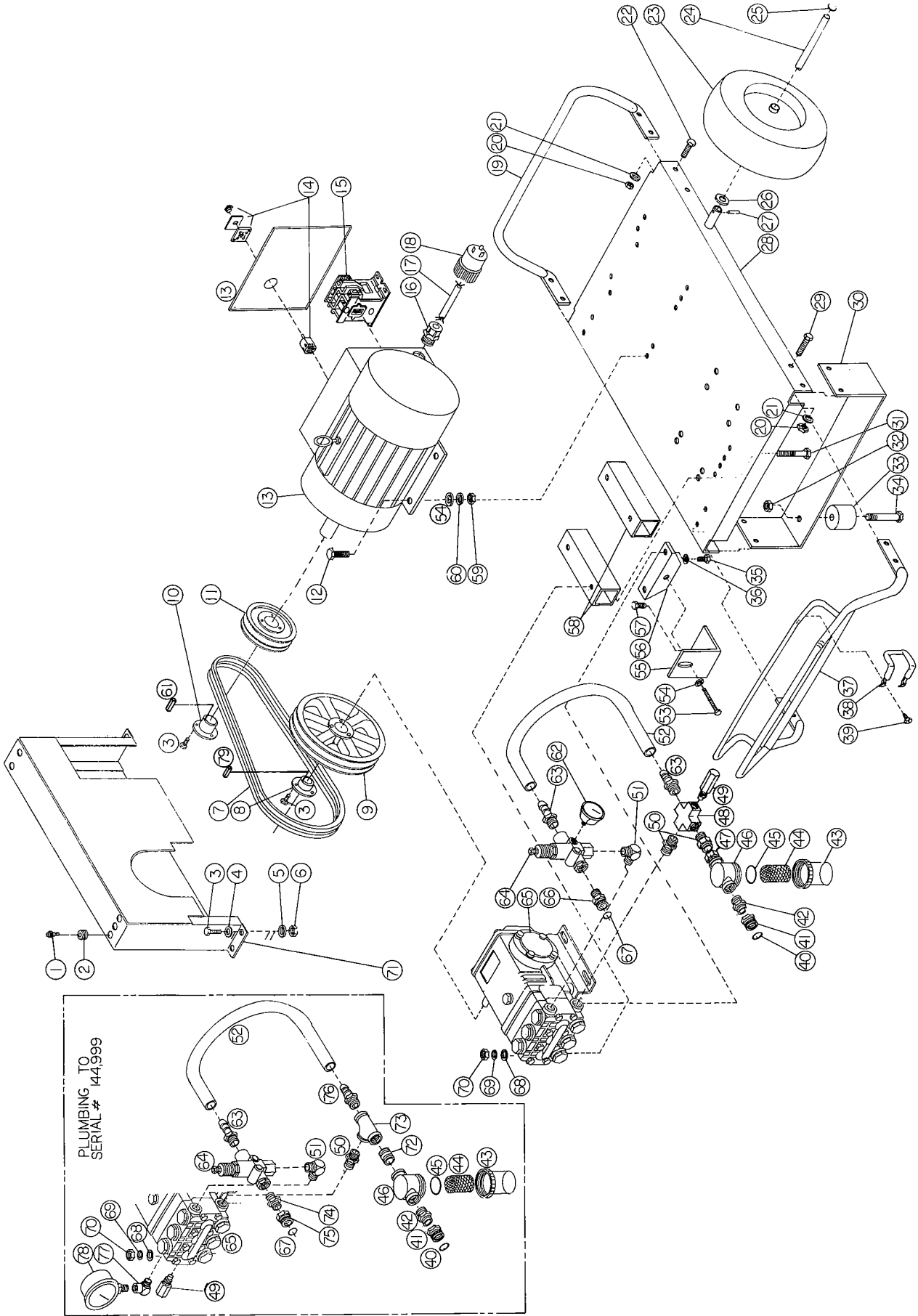
(SERIAL #000001-)

| <u>CW-2004-0ME1 PARTSLISTING KEY</u> | |
|--------------------------------------|----------|
| PUMP PART#: | 3-0007 |
| GEAR REDUCTION PART#: | NA |
| UNLOADER PART #: | 8-0031 |
| GUN/WAND ASSEMBLY PART #: | 851-0095 |
| GUN PART #: | 16-0001 |

SPECIFICATIONS:

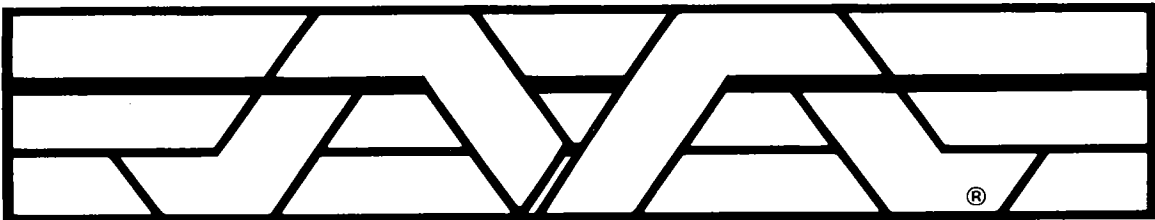
MAXIMUM PRESSURE.....2000 PSI
 MAXIMUM FLOW..... 3.8 GPM
 NOZZLE SIZE#5.5
 PUMP OIL CAPACITY..... 33.8 OZ.
 PUMP OIL GRADE..... SAE #30W NON-DET

MODEL CW-2004-0ME1



MODEL CW-2004-0ME1

| Ref. No. | Description | Part No. | Ref. No. | Description | Part No. |
|----------|--------------------------------|----------|----------|--|----------|
| 1 | Nozzle, 00055 | 18-0035 | 40 | Garden hose gasket | 26-0001 |
| 1 | Nozzle, 15055 | 18-0041 | 41 | Garden hose swivel | 23-0021 |
| 1 | Nozzle, 25055 | 18-0062 | 42 | Hex nipple | 23-0026 |
| 1 | Nozzle, 40055 | 18-0132 | 43 | Strainer bowl | 19-0025 |
| 2 | Grommet | 33-0001 | 44 | Stainless steel screen | 19-0015 |
| 3 | Bolt | 27-0015 | 45 | Strainer gasket | 26-0072 |
| 4 | Flatwasher | 28-0002 | 46 | Strainer cap | 19-0024 |
| 5 | Lockwasher | 29-0006 | | Strainer complete (includes items 43-46) | 19-0004 |
| 6 | Hex nut | 30-0002 | 47 | Hex bushing | 23-0023 |
| 7 | Belts | 11-0028 | 48 | Cross-all female | 23-0071 |
| 8 | Pump bushing | 9-0017 | 49 | Heat dump valve | 22-0005 |
| 9 | Pump sheave | 10-0042 | 50 | Hex nipple | 23-0012 |
| 10 | Motor bushing | 9-0010 | 51 | Elbow | 24-0003 |
| 11 | Motor sheave | 10-0026 | 52 | Bypass hose | 15-0035 |
| 12 | Bolt | 27-0118 | 53 | Bolt | 27-0576 |
| 13 | Motor | 2-0009 | 54 | Flatwasher | 28-0023 |
| 14 | Switch | 22-0122 | 55 | Tightener brace angle | 13-0003 |
| 15 | Contractor | 32-0038 | 56 | Tightener angle with nut | 13-0050 |
| 16 | Cord connector | 32-0040 | 57 | Bolt | 27-0117 |
| 17 | Power cord (10 feet required)* | 32-0022 | 58 | Pump mounts | 13-0028 |
| 18 | Male plug | 32-0029 | 59 | Hex nut | 30-0006 |
| 19 | Rear handle | 7-0011 | 60 | Lockwasher | 29-0008 |
| 20 | Hex nut | 30-0004 | 61 | Key-motor shaft | 43-0039 |
| 21 | Lockwasher | 29-0007 | 62 | Pressure gauge | 22-0106 |
| 22 | Bolt | 27-0066 | 63 | Hose lock barb | 23-0007 |
| 23 | Wheel | 14-0006 | 64 | Unloader valve complete | 8-0031 |
| 24 | Axle | 20-0060 | 65 | Pump complete | 3-0007 |
| 25 | Hub cap | 33-0018 | 66 | Quick connect | 17-0029 |
| 26 | Flatwasher | 28-0008 | 67 | O-ring | 25-0123 |
| 27 | Roll pin | 43-0002 | 68 | Flatwasher | 28-0005 |
| 28 | Base plate | 5-0061 | 69 | Lockwasher | 29-0009 |
| 29 | Bolt | 27-0067 | 70 | Hex nut | 30-0008 |
| 30 | Underbracket | 13-0042 | 71 | Beltguard | 6-0002 |
| 31 | Bolt | 27-0173 | 72 | Close nipple | 23-0003 |
| 32 | Hex Nut | 30-0157 | 73 | Tee | 23-0009 |
| 33 | Isolator | 14-0008 | 74 | Hex nipple | 23-0018 |
| 34 | Bolt | 27-0068 | 75 | Quick connect | 17-0004 |
| 35 | Bolt | 27-8471 | 76 | Hose barb | 23-0008 |
| 36 | Lockwasher | 29-0055 | 77 | Elbow | 24-0004 |
| 37 | Front handle | 7-0010 | 78 | Pressure gauge | 22-0007 |
| 38 | Wand holder | 20-0181 | 79 | Key, pump shaft | 43-0028 |
| 39 | Bolt | 27-3061 | | *Order in 1 foot lengths. | |



Mi-T-M[®] CORPORATION