

Mi-T-M[®] CORPORATION

8650 Enterprise Drive, Peosta IA 52068
563-556-7484 / Fax 563-556-1235
www.mitm.com

PARTS LIST FOR *CD-1002-1MUH/UC* *CD-1502-1MUH/UC* *(AFTER SERIAL #10094920)*

MOTOR HORSEPOWER:

CD-1002-1MUH/C: 1.5 HP

CD-1502-1MUH/C: 2.0 HP

PUMP OIL GRADE:

Mi-T-M PUMP OIL #AW-4085-0016

PUMP OIL CAPACITY:

11.0 oz.

NOZZLE SIZE:

CD-1002-1MUH/C: 4.0

CD-1502-1MUH/C: 3.0

This Parts Listing has been compiled for your benefit. You can be assured your Mi-T-M Cold Water Pressure Washer was constructed and designed with quality and performance in mind using over 25 years experience in the pressure washer business. Each component has been rigorously tested to insure the highest level of acceptance.

The contents of this Parts Listing are based on the latest product information available at the time of publication. Mi-T-M reserves the right to make changes in price, color, materials, equipment, specifications or models at any time without notice.

WARNING

THIS IS A PROFESSIONAL HIGH PRESSURE, COLD WATER PRESSURE WASHER. CAUTION SHOULD BE OBSERVED WHEN USING OR REPAIRING THIS UNIT! READ AND FOLLOW THE SAFETY WARNINGS LISTED BELOW BEFORE ATTEMPTING ANY REPAIRS ON THIS PRESSURE WASHER!

SAFETY WARNINGS

1. NEVER alter or modify the equipment. Be sure any accessory items and system components being used will withstand the pressure developed. Use only genuine Mi-T-M parts for repair of your pressure washer. Failure to do so can cause hazardous operating conditions and will VOID warranty.
2. NEVER make adjustments on machinery while the unit is connected to the power source. Turning over the machinery by hand during adjustment or cleaning might start the machinery, causing serious injury to the operator.
3. Know how to stop and bleed pressures quickly. Be thoroughly familiar with controls.
4. Before servicing the unit, turn unit off, relieve the water pressure and allow the unit to cool down. Do not make repairs while the unit is running. Service in a clean, dry, flat area.
5. After testing the machine, DO NOT leave the pressurized unit unattended. Shut off the unit and release trapped pressure before leaving.

Table of Contents

SPECIFICATIONS.....3

FRAME ASSEMBLY FOR CD-1002-1MUH (AFTER SERIAL #307238)4

FRAME ASSEMBLY FOR CD-1002-1MUC (AFTER SERIAL #10040521)6

FRAME ASSEMBLY FOR CD-1502-1MUH8

FRAME ASSEMBLY FOR CD-1502-1MUC (AFTER SERIAL #10040399)10

MOTOR ASSEMBLY (851-0247 & 851-0248)12

PUMP ASSEMBLY (3-0137) (AFTER SERIAL #10094920).....14

UNLOADER ASSEMBLY (8-0295)16

DETERGENT INJECTOR (50-0126).....18

GUN ASSEMBLY (16-0167)20

LANCE ASSEMBLY (851-0267)22

OPTIONAL CART ASSEMBLY (AW-7005-02WK)24

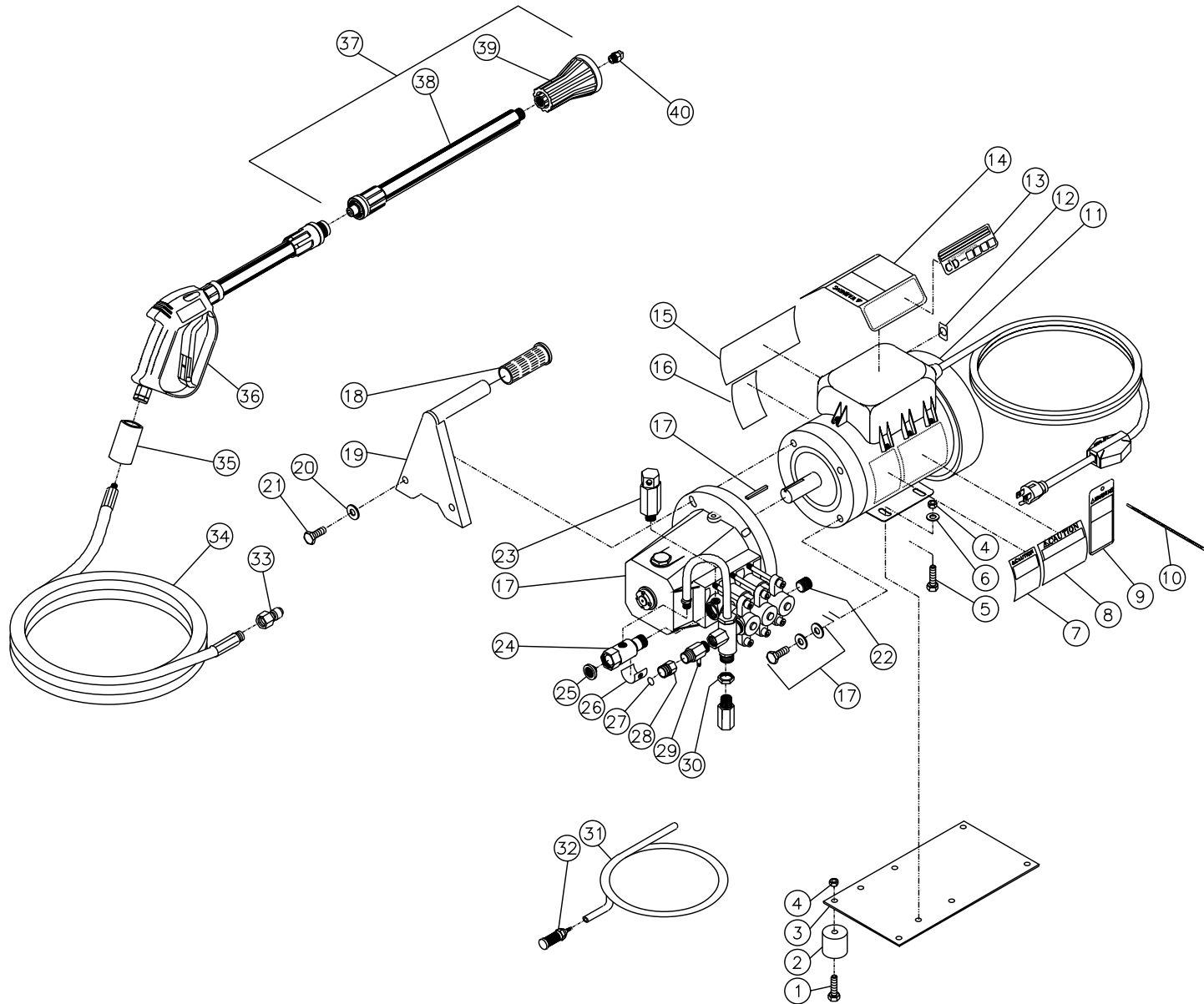
WIRING SCHEMATIC26

WIRING DIAGRAM.....27

SPECIFICATIONS

MODEL NUMBER	CD-1002-1MUH	CD-1002-1MUC	CD-1502-1MUH	CD-1502-1MUC
Operating Pressure (PSI/Bar):	1000/69		1500/103	
High Pressure Nozzle:	4.0		3.0	
Water Volume (GPM/lpm):	2.0/7.6			
Motor:	Totally enclosed fan cooled, cricuti breadker thermal overload protection, 35ft. power supply cord with Ground Fault Circuit Interrupter (GFCI)			
Horsepower	1.5		2.0	
Voltage	120			
Phase	Single			
Amps	12.5		17.0	
Pump:	Direct Driven, Oil Bath, Triplex Piston			
Oil Type	Mi-T-M Pump Oil #AW-4085-0016			
Oil Capacity (oz./liters)	11/33			
Plungers	Ceramic			
Manifold	Forged Brass			
Valves	Stainless Steel			
Unloader	Preset			
Heat Dump Valve	Relieves heated water during unloader bypass stage			
Detergent Injector:	Low pressure down stream from pump			
Unit Net Weight (lbs/Kg)	65.5/30	84/38	70/32	84/38
Unit Shipping Weight (lbs/Kg)	71/32.5	98/44.5	75.5/34	98/44.5
Unit Net Dimension (in)	20Lx11.5Wx14H	30.5Lx16.5Wx23H	20Lx11.5Wx14H	30.5Lx16.5Wx23H
Unit Net Dimension (cm)	51Lx29Wx35.5H	77.5Lx42Wx58.5H	51Lx29Wx35.5H	77.5Lx42Wx58.5H
Unit Shipping Dimension (in)	27Lx11.5Wx15.5H	31Lx17Wx25H	27Lx11.5Wx15.5H	31Lx17Wx25H
Unit Shipping Dimension (cm)	69Lx29Wx39.5H	79Lx42Wx64H	69Lx29Wx39.5H	79Lx42Wx64H

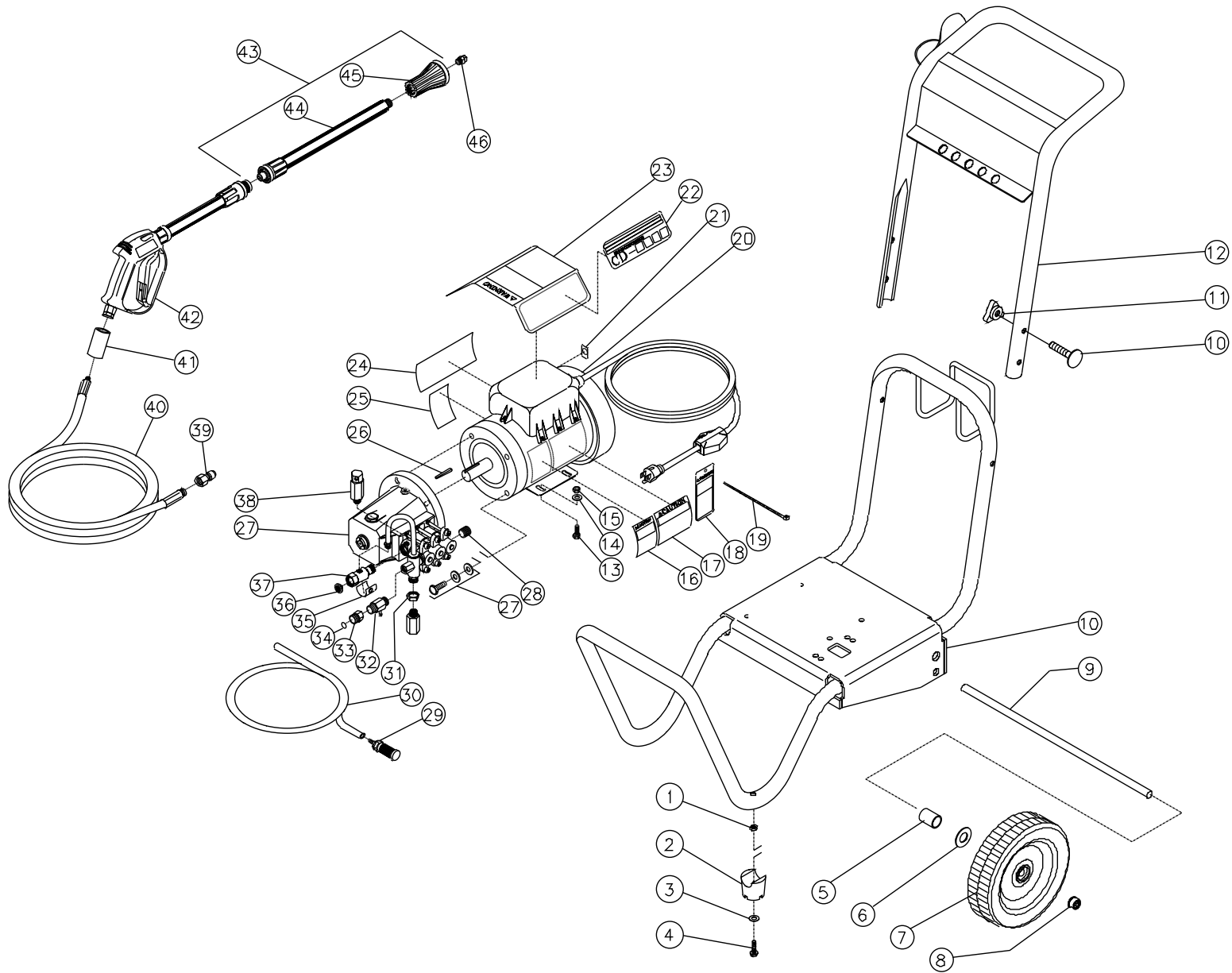
FRAME ASSEMBLY FOR CD-1002-1MUH (AFTER SERIAL #307238)



CD-1002-1MUH-111201-RD

FRAME ASSEMBLY FOR CD-1002-1MUH (AFTER SERIAL #307238)									
REF. #	DESCRIPTION	PART #	QTY.	REF. #	DESCRIPTION	PART #	QTY.		
1	Screw	27-0068	4	22	Plug	23-0244	1		
2	Isolator	14-0008	4	23	Heat Dump Valve	22-0239	1		
3	Base Plate	5-0110A01	1	24	Inlet Fitting	23-0148	1		
4	Locknut	30-0157	8	25	Inlet Filter	19-0001	1		
5	Bolt	27-0066	4	26	Decal- Temperature Indicator	33-0236	1		
6	Washer	28-0003	4	27	O-ring (Replacement Only)	25-0123	-		
7	Decal- Warning: Hot Water (See 34-9015)	N/A Sep.	1	28	Quick Connect Socket	17-0004	1		
8	Decal- Caution/Important (See 34-9015)	N/A Sep.	1	29	Detergent Injector	50-0126	1		
9	Hang Tag- Warning: Risk of Electrocutation (E/F/S)	34-1035	1	30	Locknut	46-0651	1		
10	Cable Tie	33-0022	1	31	Detergent Hose *(Four Feet Required)	15-0021	1		
11	Motor Assembly- 1.5 H.P.	851-0247	1	32	Detergent Strainer	19-0050	1		
12	Decal- On/Off (See 34-9015)	N/A Sep.	1	33	Quick Connect Plug	17-0006	1		
13	Decal- Mi-T-M CD-1002	34-0629	2	34	High Pressure Hose	15-0138	1		
14	Decal- Warning: Risk of Electrocutation (See 34-9015)	N/A Sep.	1	35	Foam Covering	7-0046	1		
15	Decal- Warning: Risk of Injection/Explosion (See 34-9015)	N/A Sep.	1	36	Gun w/Lance	16-0167	1		
16	Decal- Data Plate	N/A	1	37	Lance Cone Assembly (Includes 40, 41)	851-0267	1		
17	Pump	3-0137	1	38	Lance	16-0310	1		
18	Grip	7-0059	1	39	High/Low Adjustable Nozzle	16-0305	1		
19	Handle	7-0078A01	1	40	Spray Nozzle- 1504	18-0054	1		
20	Washer w/Pump	29-0155	2		Safety Decal Kit (Inc. 7-8, 12, 14-15)	34-9015			
21	Bolt	27-0119	2	*Must Order in One Foot Lengths					

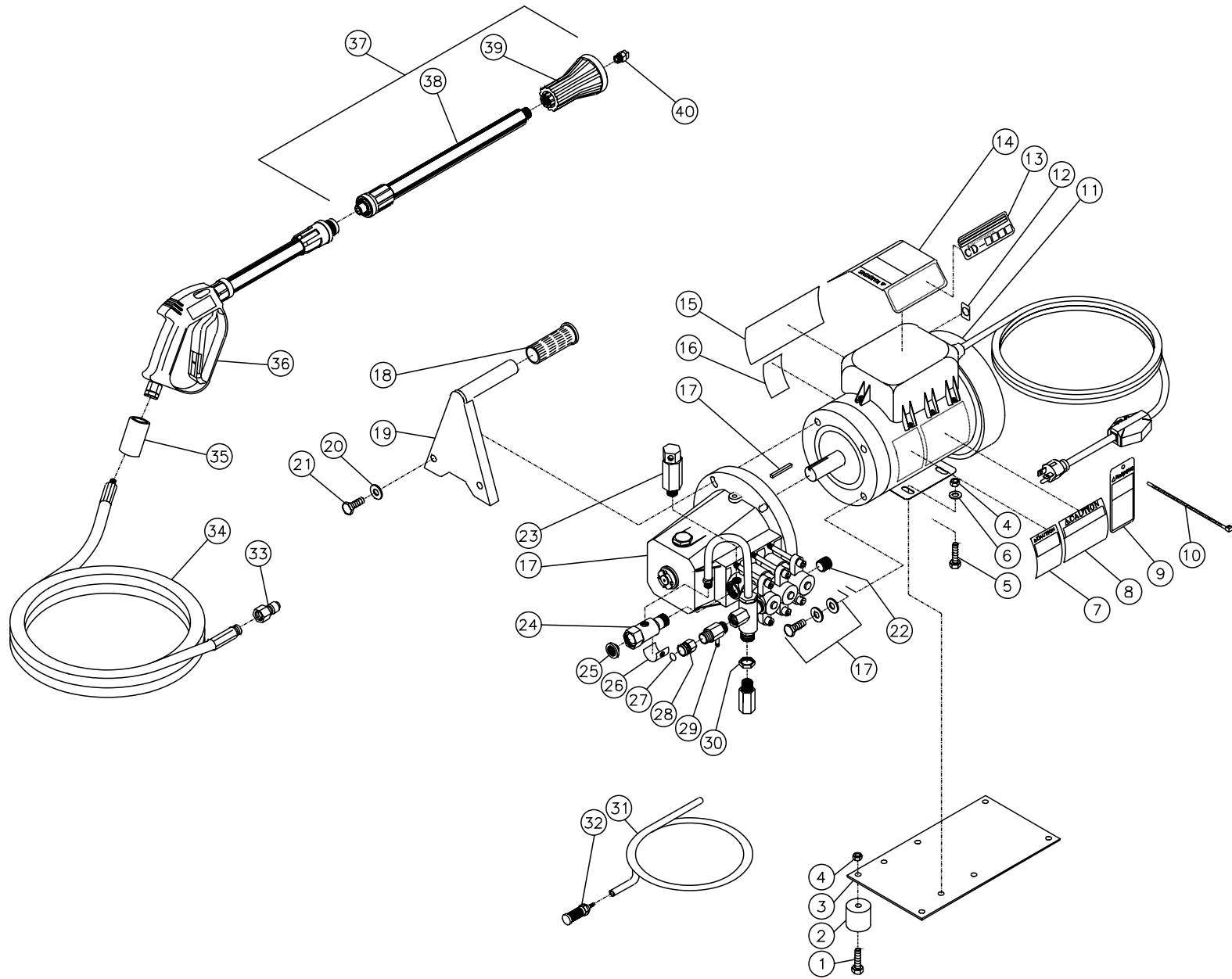
FRAME ASSEMBLY FOR CD-1002-1MUC (AFTER SERIAL #10040521)



CD-1002-1MUC-112102-RD

FRAME ASSEMBLY FOR CD-1002-1MUC (AFTER SERIAL #10040521)								
REF. #	DESCRIPTION	PART #	QTY.		REF. #	DESCRIPTION	PART #	QTY.
1	Locknut	30-0155	2		25	Decal- Warning: Risk of Injection/Explosion (See 34-9015)	N/A Sep.	1
2	Isolator	14-0066	2		26	Decal- Date Plate	N/A	1
3	Washer	28-0021	2		27	Pump	3-0137	1
4	Bolt	27-0019	2		28	Plug	23-0244	1
5	Axle Spacer	20-0406A01	2		29	Detergent Strainer	19-0050	1
6	Washer	28-0006	5		30	Detergent Hose *(Four Feet Required)	15-0021	1
7	Wheel	14-0052	2		31	Locknut	46-0651	1
8	Hub Cap	33-0055	2		32	Detergent Injector	50-0126	1
9	Axle	20-0517	1		33	Quick Connect Socket	17-0004	1
10	Frame	5-0148A01	1		34	O-ring (Replacement Only)	25-0123	-
11	Bolt	31-0051	2		35	Decal- Temperature Indicator	33-0236	1
12	Knob	7-0107	2		36	Inlet Filter	19-0001	1
13	Handle Assembly	7-0158A01	1		37	Inlet Fitting	23-0148	1
14	Bolt	27-0066	4		38	Heat Dump Valve	22-0239	1
15	Washer	28-0003	4		39	Quick Connect Plug	17-0006	1
16	Locknut	30-0157	4		40	High Pressure Hose	15-0138	1
17	Decal- Warning: Hot Water (See 34-9015)	N/A Sep.	1		41	Foam Covering	7-0046	1
18	Decal- Caution/Important (See 34-9015)	N/A Sep.	1		42	Gun w/Lance	16-0167	1
19	Hang Tag- Warning: Risk of Electrocution (E/F/S)	34-1035	1		43	Lance Cone Assembly (Inc. 44, 45)	851-0267	1
20	Cable Tie	33-0022	1		44	Lance	16-0310	1
21	Motor Assembly- 1.5 H.P.	851-0247	1		45	High/Low Adjustable Nozzle	16-0305	1
22	Decal- On/Off	34-0612	1		46	Spray Nozzle- 1504	18-0054	1
23	Decal- Mi-T-M CD-1002	34-0629	2			Safety Decal Kit (Inc. 17-18, 22, 24-25)	34-9015	
24	Decal- Warning: Risk of Electrocution (See 34-9015)	N/A Sep.	1		*Must Order in One Foot Lengths			

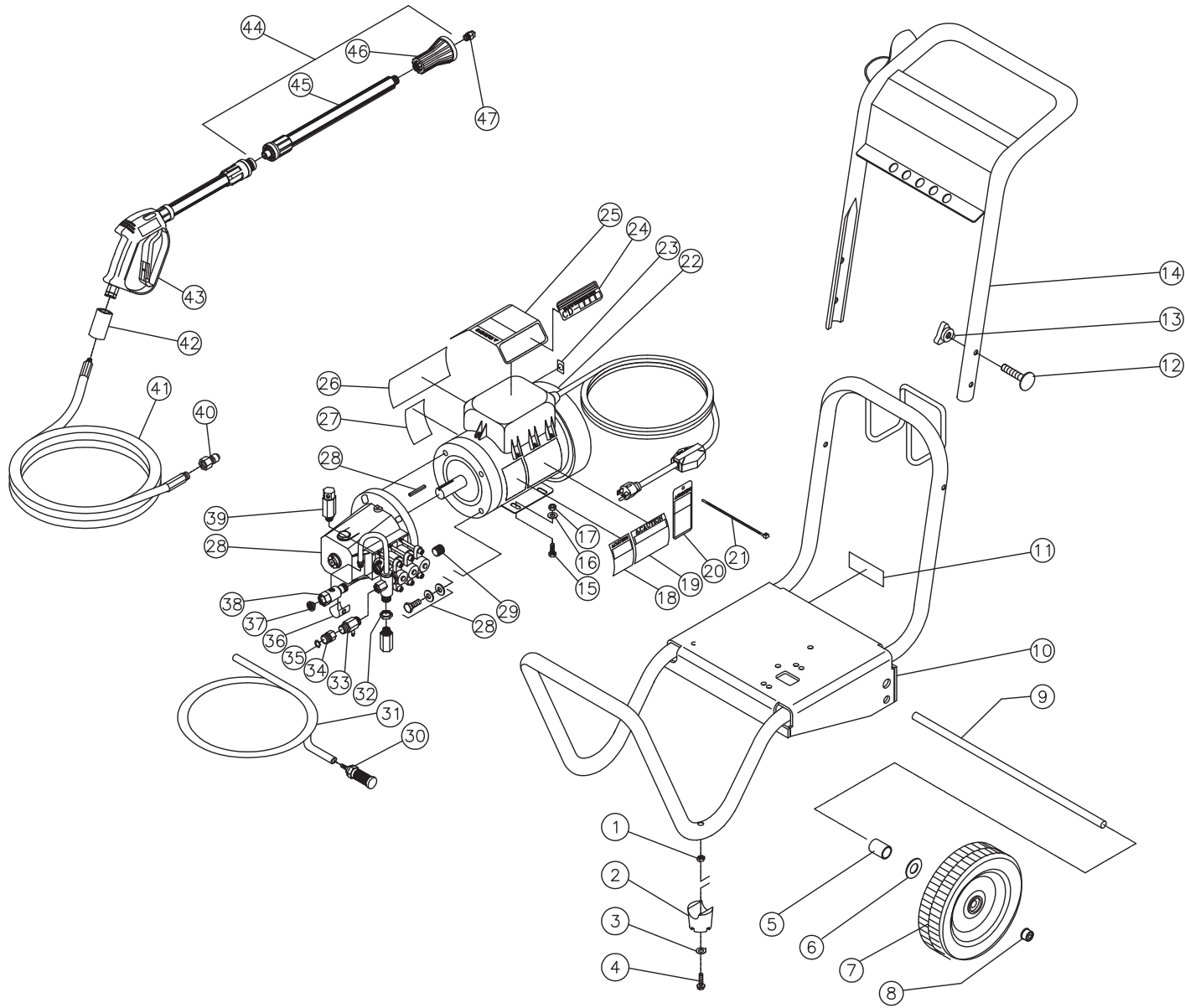
FRAME ASSEMBLY FOR CD-1502-1MUH



CD-1502-1MUH-111201-RD

FRAME ASSEMBLY FOR CD-1502-1MUH							
REF. #	DESCRIPTION	PART #	QTY.	REF. #	DESCRIPTION	PART #	QTY.
1	Screw	27-0068	4	22	Plug	23-0244	1
2	Isolator	14-0008	4	23	Heat Dump Valve	22-0239	1
3	Base Plate	5-0110A01	1	24	Inlet Fitting	23-0148	1
4	Locknut	30-0157	8	25	Inlet Filter	19-0001	1
5	Bolt	27-0066	4	26	Decal- Temperature Indicator	33-0236	1
6	Washer	28-0003	4	27	O-ring (Replacement Only)	25-0123	-
7	Decal- Warning: Hot Water (See 34-9015)	N/A Sep.	1	28	Quick Connect Socket	17-0004	1
8	Decal- Caution/Important (See 34-9015)	N/A Sep.	1	29	Detergent Injector	50-0126	1
9	Hang Tag- Warning: Risk of Electrocutation (E/F/S)	34-1035	1	30	Locknut	46-0651	1
10	Cable Tie	33-0022	1	31	Detergent Hose *(Four Feet Required)	15-0021	1
11	Motor Assembly- 2.0 H.P.	851-0248	1	32	Detergent Strainer	19-0050	1
12	Decal- On/Off (See 34-9015)	N/A Sep.	1	33	Quick Connect Plug	17-0006	1
13	Decal- Mi-T-M CD-1502	34-0630	2	34	High Pressure Hose	15-0138	1
14	Decal- Warning: Risk of Electrocutation (See 34-9015)	N/A Sep.	1	35	Foam Covering	7-0046	1
15	Decal- Warning: Risk of Injection/Explosion (See 34-9015)	N/A Sep.	1	36	Gun w/Lance	16-0167	1
16	Decal- Data Plate	N/A	1	37	Lance Cone Assembly (Includes 38, 39)	851-0267	1
17	Pump	3-0137	1	38	Lance	16-0310	1
18	Grip	7-0059	1	39	High/Low Adjustable Nozzle	16-0305	1
19	Handle	7-0078A01	1	40	Spray Nozzle- 1503	18-0053	1
20	Washer w/Pump	29-0155	2		Safety Decal Kit (Inc. 7-8, 12, 14-15)	34-9015	
21	Bolt	27-0119	2	*Must Order in One Foot Lengths			

FRAME ASSEMBLY FOR CD-1502-1MUC (AFTER SERIAL #10040399)

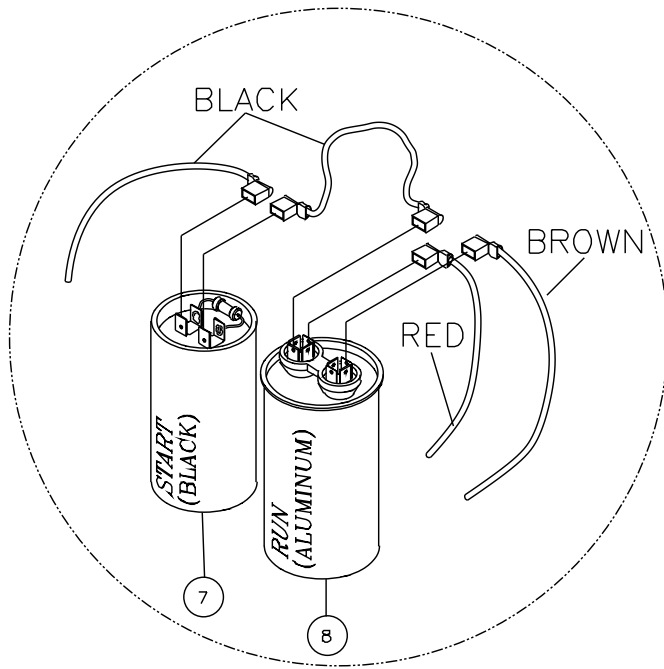


CD-1502-1MUC-060705-DLG

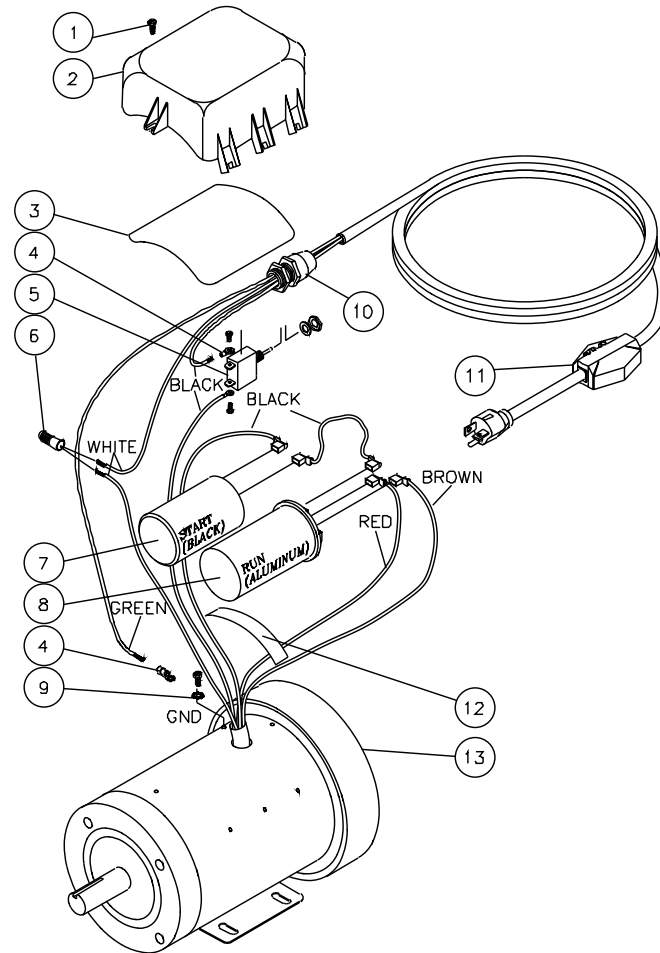
FRAME ASSEMBLY FOR CD-1502-1MUC (AFTER SERIAL #10040399)							
REF. #	DESCRIPTION	PART #	QTY.	REF. #	DESCRIPTION	PART #	QTY.
1	Locknut	30-0155	2	25	Decal- Warning: Risk of Electrocutation (See 34-9015)	N/A Sep.	1
2	Isolator	14-0066	2	26	Decal- Warning: Risk of Injection/Explosion (See 34-9015)	N/A Sep.	1
3	Washer	28-0021	2	27	Decal- Date Plate	N/A	1
4	Bolt	27-0019	2	28	Pump	3-0137	1
5	Axle Spacer	20-0406A01	2	29	Plug	23-0244	1
6	Washer	28-0006	5	30	Detergent Strainer	19-0050	1
7	Wheel	14-0052	2	31	Detergent Hose *(Four Feet Required)	15-0021	1
8	Hub Cap	33-0055	2	32	Locknut	46-0651	1
9	Axle	20-0517	1	33	Detergent Injector	50-0126	1
10	Frame	5-0148A01	1	34	Quick Connect Socket	17-0004	1
11	Decal- 800# (See 34-9015)	N/A Sep.	1	35	O-ring (Replacement Only)	25-0123	-
12	Bolt	31-0051	2	36	Heat Tape	33-0236	1
13	Knob	7-0107	2	37	Inlet Filter	19-0001	1
14	Handle Assembly	7-0158A01	1	38	Inlet Fitting	23-0148	1
15	Bolt	27-0066	4	39	Thermal Relief Valve	22-0239	1
16	Washer	28-0003	4	40	Quick Connect Plug	17-0006	1
17	Locknut	30-0157	4	41	High Pressure Hose	15-0138	1
18	Decal- Warning: Hot Water (See 34-9015)	N/A Sep.	1	42	Foam Covering	7-0046	1
19	Decal- Caution/Important (See 34-9015)	N/A Sep.	1	43	Gun w/Lance	16-0167	1
20	Hang Tag- Warning: Risk of Electrocutation (E/F/S)	34-1035	1	44	Lance Cone Assembly (Inc. 43, 44)	851-0267	1
21	Cable Tie	33-0022	1	45	Lance	16-0310	1
22	Motor Assembly- 2.0 H.P.	851-0248	1	46	High/Low Adjustable Nozzle	16-0305	1
23	Decal- On/Off (See 34-9015)	N/A Sep.	1	47	Spray Nozzle- 1503	18-0053	1
24	Decal- Mi-T-M CD-1502	34-0630	2		Safety Decal Kit (Inc. 11, 18-19, 23, 25-26)	34-9015	

*Must Order in One Foot Lengths

MOTOR ASSEMBLY (851-0247 & 851-0248)

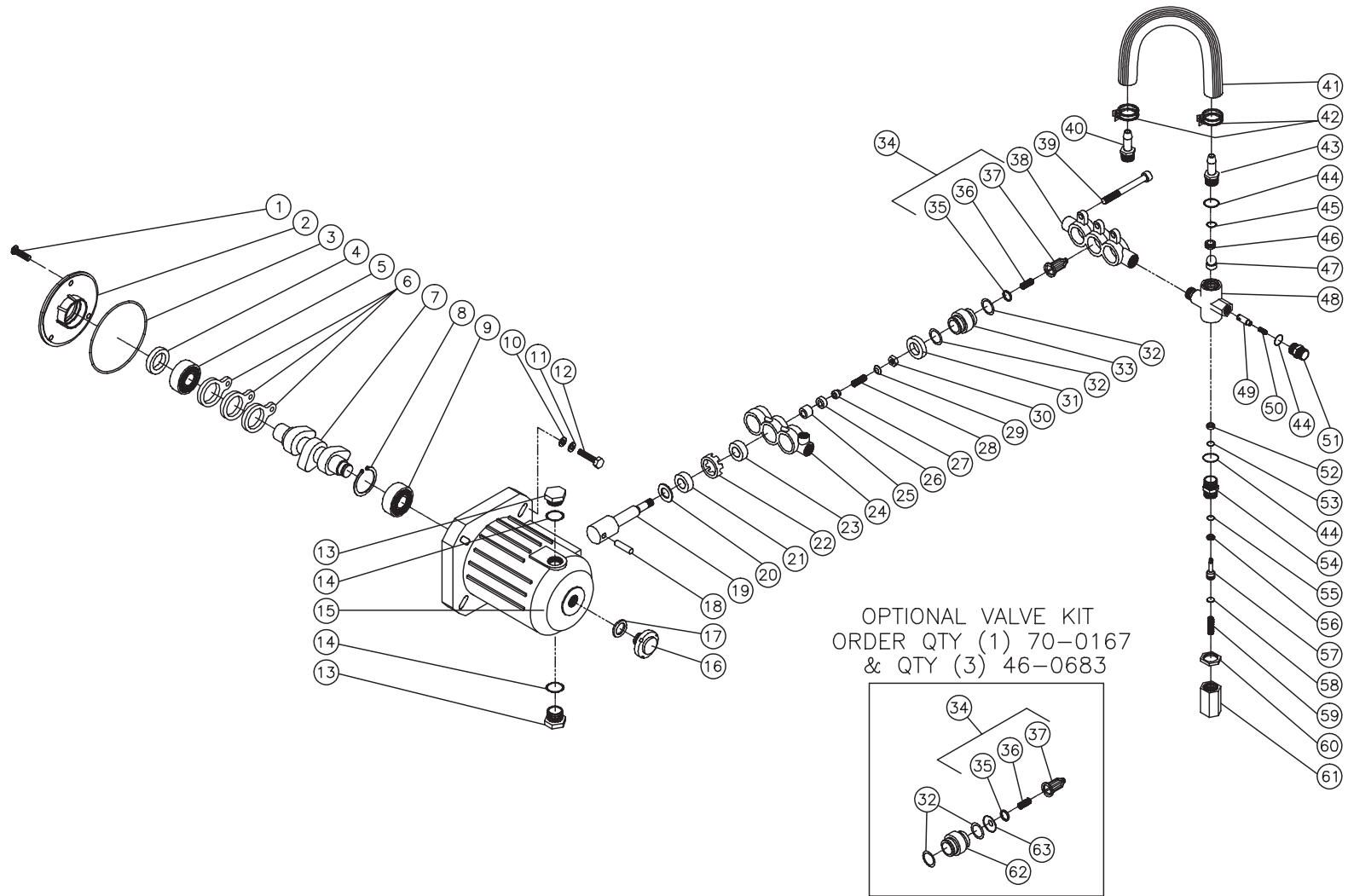


CAPACITOR TERMINAL ASSEMBLY



MOTOR ASSEMBLY (851-0248)			
REF. #	DESCRIPTION	PART #	QTY.
1	Hex Screw	27-8389	8
2	Motor Box	52-0041	1
3	O-ring	25-0338	1
4	Terminal	32-0099	2
5	Switch (20 Amp)	32-0348	1
6	Crimp Splice	32-0359	1
7	Starting Capacitor	32-0412	1
8	Running Capacitor	32-0413	1
9	Lockwasher	28-1009	1
10	Strain Relief	32-0407	1
11	GFCI Cord	32-0215	1
12	Motor Box Strap	52-0042	1
13	Motor- 2.0 H.P. (See 851-0248)	N/A Sep.	1
	Complete Motor Assembly (Inc. 1-13)	851-0248	

PUMP ASSEMBLY (3-0137) (AFTER SERIAL #10094920)



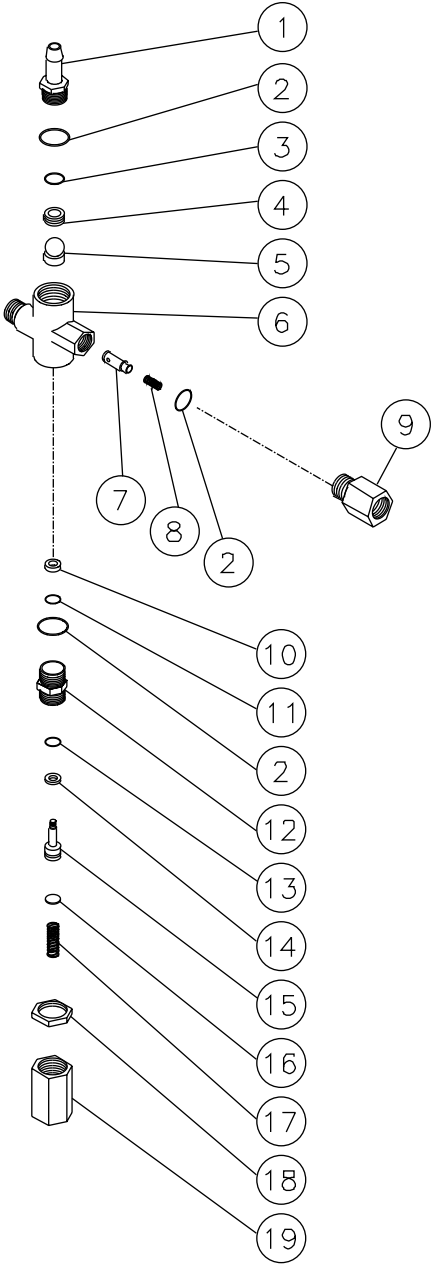
OPTIONAL VALVE KIT
 ORDER QTY (1) 70-0167
 & QTY (3) 46-0683

CONVERTS 2SFX PUMP INTO 2SF PUMP

3-0137-011204-BAR

PUMP ASSEMBLY (3-0137) (AFTER SERIAL #10094920)												
REF #	DESCRIPTION	PART #	QTY	REF #	DESCRIPTION	PART #	QTY	REF #	DESCRIPTION	PART #	QTY	
1	Bolt	27-8401	3	24	Manifold Inlet	46-0304	1	47	Valve & Ball Assembly	46-0320	1	
2	Cover-Rear	46-1125	1	25	Plunger	46-0305	3	48	Unloader Body	N/A	1	
3	O-ring	25-0557	1	26	Valve Inlet	46-0753	3	49	Flow Balancer	46-0326	1	
4	Oil Seal	26-0284	1	27	Spacer	46-0307	3	50	Spring	46-0531	1	
5	Bearing-Inner	48-0027	1	28	Spring	49-0064	3	51	Discharge Fitting	46-0327	1	
6	Connecting Rod	46-0298	3	29	Washer	46-0316	3	52	Back-up Ring (See 70-0131)	N/A Sep.	1	
7	Crankshaft	46-0653	1	30	Nut	46-0317	3	53	O-ring (See 70-0131)	N/A Sep.	1	
8	Snap Ring	46-0300	1	31	Seal-High Pressure (See 70-0139)	N/A Sep.	3	54	Piston Retainer	46-0321	1	
9	Bearing-Outer	48-0028	1	32	O-ring (See 70-0139)	N/A Sep.	6	55	O-ring (See 70-0131)	N/A Sep.	1	
10	Flatwasher (See 70-0096)	N/A Sep.	4	33	Discharge Valve Seat	46-0309	3	56	Back-up Ring (See 70-0131)	N/A Sep.	1	
11	Lockwasher (See 70-0096)	N/A Sep.	4	34	Valve Assembly (Inc. 35-37) (See 70-0130)	N/A Sep.	3	57	Piston Stem	46-0324	1	
12	Bolt (See 70-0096)	N/A Sep.	4	35	Discharge Valve (See 70-0130)	N/A Sep.	3	58	Spring Retainer	46-0323	1	
13	Plug	39-0057	2	36	Valve Spring (See 70-0130)	N/A Sep.	3	59	Unloader Spring	49-0114	1	
14	O-ring	25-0199	2	37	Valve Spring Retainer (See 70-0130)	N/A Sep.	3	60	Locknut	46-0651	1	
15	Crankcase	46-1124	1	38	Manifold Outlet	46-0311	1	61	Hex Adjusting Cap	46-0640	1	
16	Oil Level Gauge	22-0123	1	39	Bolt	46-0315	6	62	Discharge Valve Adapter	46-0683	3	
17	Gasket	26-0139	1	40	Hose Barb	23-0265	1	63	Valve Seat	46-0682	3	
18	Piston Rod Pin	43-0063	3	41	By-pass Hose	46-0645	1		Bolt Mount Kit (Inc. 4 each 10-12)	70-0096		
19	Piston Rod	46-0302	3	42	Hose Clamp	46-0532	1		Seal Kit (Inc. 3 each 23, 26, 31, 32)	70-0139		
20	Washer	46-0314	3	43	Hose Barb	46-0643	1		Valve Kit (Inc. 3 each 32-33, 35-37)	70-0130		
21	Oil Seal	26-0156	3	44	O-ring (See 70-0131)	N/A Sep.	3		Optional Valve Kit (Inc. 3 each 32, 34, 63)	70-0167		
22	Seal Retainer	46-0303	3	45	O-ring	25-0202	1		O-ring Kit (Inc. 44, 52-53, 55-56)	70-0131		
23	Low Pressure Seal (See 70-0139)	N/A Sep.	3	46	Valve Seat	46-0319	1		Unloader Complete (Inc. 43-61)	8-0295		

UNLOADER ASSEMBLY (8-0295)



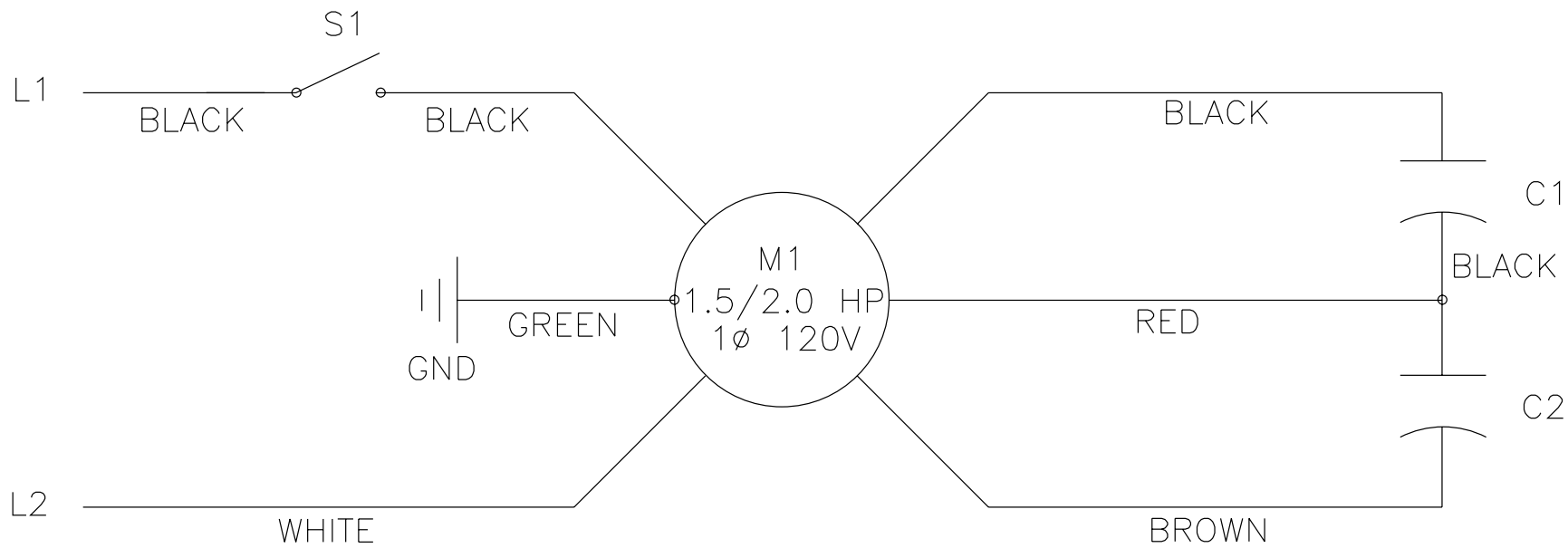
8-0295-101002-RD

UNLOADER ASSEMBLY (8-0295)

REF. #	DESCRIPTION	PART #	QTY.	REF. #	DESCRIPTION	PART #	QTY.
1	Bypass Fitting	46-0643	1	12	Piston Retainer	46-0321	1
2	O-ring (See 70-0131)	N/A Sep.	3	13	O-ring (See 70-0131)	N/A Sep.	1
3	O-ring	25-0202	1	14	Backup Ring (See 70-0131)	N/A Sep.	1
4	Bypass Seat	46-0319	1	15	Piston Stem	46-0324	1
5	Valve and Ball Assembly	46-0320	1	16	Spring Retainer	46-0323	1
6	Unloader Body (See 8-0295)	N/A Sep.	1	17	Unloader Spring	49-0113	1
7	Flow Balancer	46-0326	1	18	Locknut	46-0651	1
8	Spring	46-0531	1	19	Hex Adjusting Cap	46-0640	1
9	Outlet Fitting (See 8-0295)	N/A Sep.	1		Unloader Assembly (Inc. 1-19)	8-0295	
10	Backup Ring (See 70-0131)	N/A Sep.	1		Unloader Repair Kit (Inc. 2, 10, 11, 13, 14)	70-0131	
11	O-ring (See 70-0131)	N/A Sep.	1				

WIRING SCHEMATIC

SCHEMATIC



OMCWU189S -061295-DCE

WIRING DIAGRAM

DIAGRAM

