



Performance Under Pressure

PARTS LIST FOR
CBA-2504-0MHB/RB
(AFTER SERIAL #10239171)

Engine Oil Grade:	SAE 10W-30
Engine Oil Capacity:	
Honda:	37 oz.
Subaru:	35.5 oz.
Pump Oil Grade:	Mi-T-M Pump Oil #AW-4085-0016
Pump Oil Capacity:	15 oz.
Nozzle Size:	4.5

This Parts Listing has been compiled for your benefit. You can be assured your Mi-T-M Cold Water Pressure Washer was constructed and designed with quality and performance in mind using over 25 years experience in the pressure washer business. Each component has been rigorously tested to insure the highest level of acceptance.

The contents of this Parts Listing are based on the latest product information available at the time of publication. Mi-T-M reserves the right to make changes in price, color, materials, equipment, specifications or models at any time without notice.

WARNING

THIS IS A PROFESSIONAL HIGH PRESSURE, COLD WATER PRESSURE WASHER. CAUTION SHOULD BE OBSERVED WHEN USING OR REPAIRING THIS UNIT! READ AND FOLLOW THE SAFETY WARNINGS LISTED BELOW BEFORE ATTEMPTING ANY REPAIRS ON THIS PRESSURE WASHER!

SAFETY WARNINGS

1. NEVER alter or modify the equipment. Be sure any accessory items and system components being used will withstand the pressure developed. Use only genuine Mi-T-M parts for repair of your pressure washer. Failure to do so can cause hazardous operating conditions and will VOID warranty.
2. NEVER make adjustments on machinery while the unit is connected to the engine without first removing the ignition cables from the spark plugs. Turning over the machinery by hand during adjustment or cleaning might start the machinery, causing serious injury to the operator.
3. Know how to stop and bleed pressures quickly. Be thoroughly familiar with controls.
4. Before servicing the unit, turn unit off, relieve the water pressure and allow the unit to cool down. Do not make repairs while the unit is running. Service in a clean, dry, flat area.
5. After testing the machine, DO NOT leave the pressurized unit unattended. Shut off the unit and release trapped pressure before leaving.

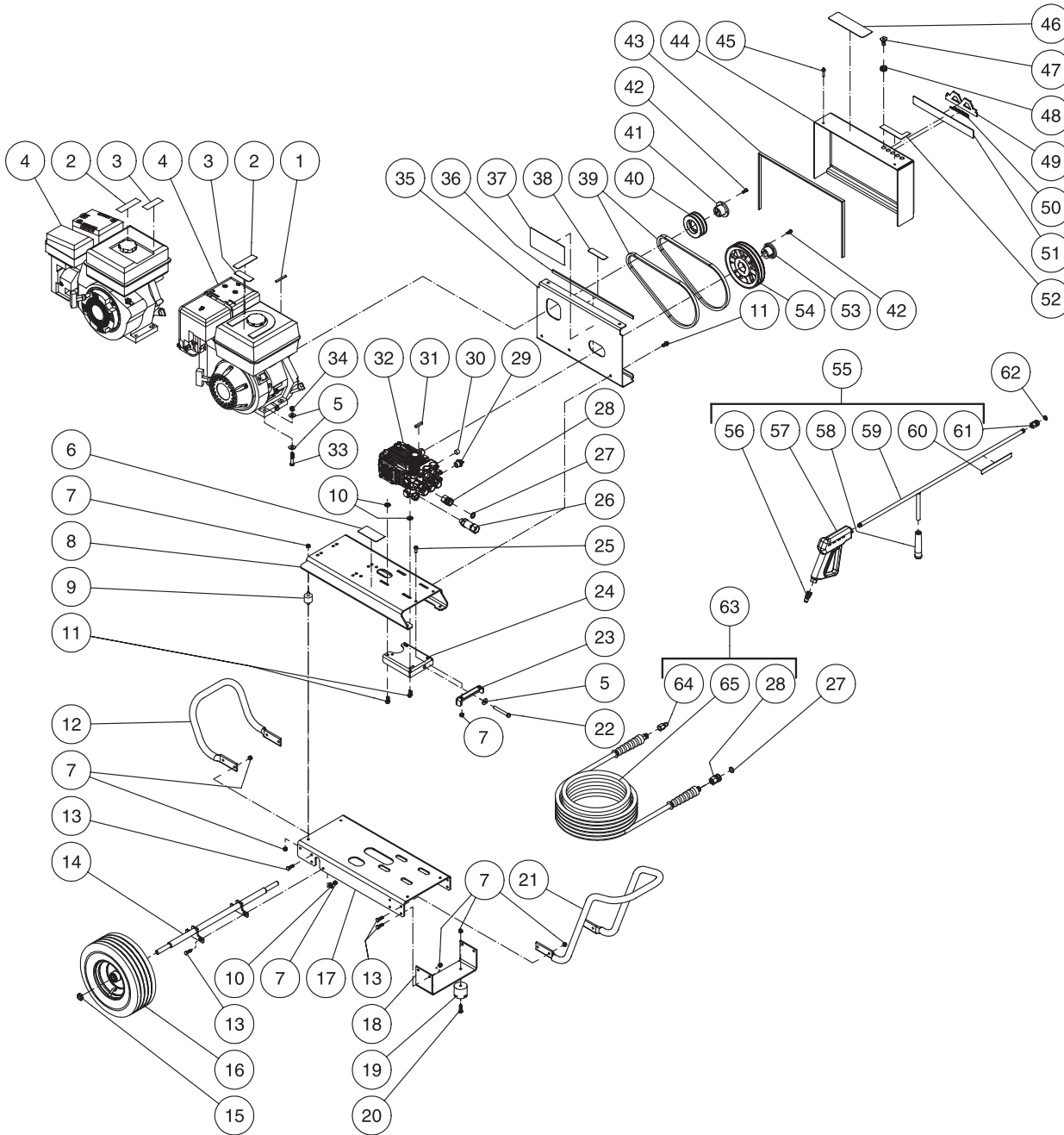
Table of Contents

SPECIFICATIONS.....	3
FRAME ASSEMBLY (AFTER SERIAL #10239171).....	4
PUMP ASSEMBLY (3-0268)	6
UNLOADER ASSEMBLY (8-0533)	8
GUN ASSEMBLY (16-0001)	10

SPECIFICATIONS

MODEL NUMBER	CBA-2504-0MHB	CBA-2504-0MRB
Operating Pressure (PSI/Bar):	2500 / 172	
High Pressure Nozzle:	4.5	
Water Volume (GPM/lpm):	3.6 / 13.6	
Engine:	Honda	Subaru
Horsepower	9.0	
Engine Type	4 Stroke, Overhead Valve, Single Cylinder	
Oil Type	SAE 10W 30	
Oil Capacity (oz./liters)	37 / 1.1	35.5 / 1.05
Low Oil Protection	Oil Alert™	Oil Sensor
Fuel Type	Unleaded Gasoline 86 Octane Minimum	
Fuel Capacity (gallon/ liters)	1.6 / 6.0	
Starting	Recoil	
Maximum No Load RPM	3600	
Pump:	Belt Driven, Oil Bath, Triplex Piston	
Oil Type	Mi-T-M Pump Oil #AW-4085-0016	
Oil Capacity (oz./liters)	15 / .44	
Plungers	Ceramic	
Manifold	Forged Brass	
Valves	Stainless Steel	
Unloader	Adjustable	
Thermal Relief Valve	Relieves heated water during unloader bypass stage	
Unit Net Weight (Lbs/kg)	137 / 62	
Unit Shipping Weight (Lbs/kg)	191 / 86.5	
Unit Net Dimension (In/cm)	46.5L x 28W x 27.5H /118L x 71W x 70H	
Unit Shipping Dimension (In/cm)	48L x 30W x 34H /122L x 76W x 86H	

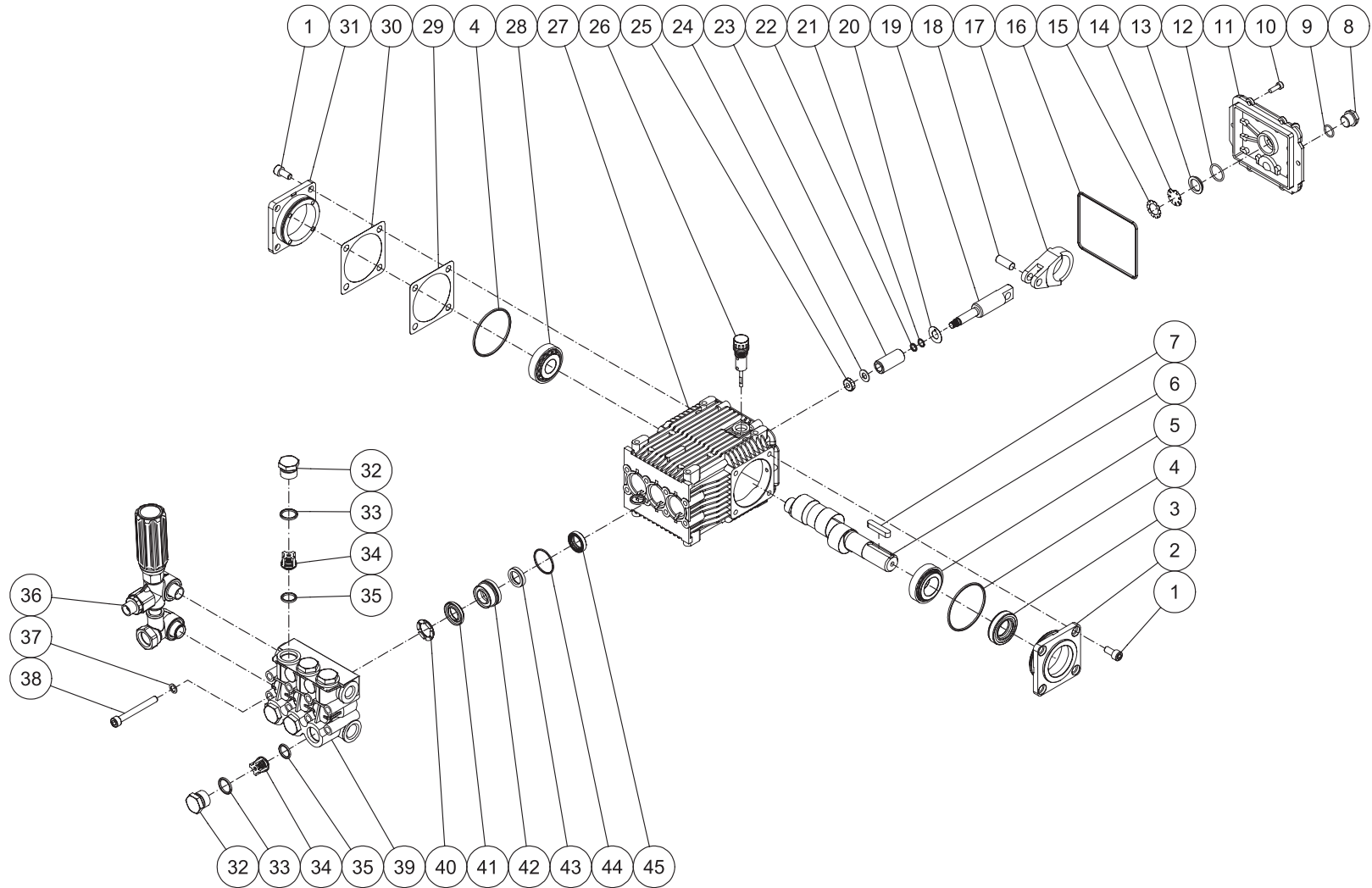
FRAME ASSEMBLY (AFTER SERIAL #10239171)



CBA-2504-0MHB_RB-011705-JJT

FRAME ASSEMBLY (AFTER SERIAL #10239171)											
REF #	DESCRIPTION	PART #	QTY	REF #	DESCRIPTION	PART #	QTY	REF #	DESCRIPTION	PART #	QTY
1	Key	43-0078	1	24	Tension Bracket	21-0220	1	47	Nozzle- 1504.5	18-0039	1
2	Decal- Warning: Risk of Burns (See 34-9017)	N/A Sep.	1	25	Bolt	27-0066	2	-	Nozzle- 2504.5	18-0060	1
3	Decal- Caution: Risk of Fire (See 34-9017)	N/A Sep.	1	26	Inlet Filter	19-0206	1	-	Nozzle- 4004.5	18-0065	1
4	Engine- Honda 9 HP (CBA-2504-0MHB)	1-0065	1	27	O-ring	25-0123	2	48	Grommet	33-0001	5
-	Engine- Subaru 9 HP (CBA-2504-0MRB)	1-0134	1	28	Quick Connect Socket	17-0004	2	49	Decal- Mi-T-M Small Logo	62-0086	1
5	Flatwasher	28-0023	9	29	Thermal Relief Valve	22-0005	1	50	Decal- White Die Cut 2500PSI	34-0773	1
6	Decal- Data Plate	N/A	1	30	Plug	23-0244	1	51	Decal- Mi-T-M Stripe	34-0502	1
7	Locknut	30-0157	28	31	Key w/ Pump	43-0091	1	52	Decal- Nozzles 0, 15, 25, 40	34-0500	1
8	Isolation Plate	5-0223	1	32	Pump	3-0268	1	53	Bushing	9-0017	1
9	Isolator	14-0097	4	33	Bolt	27-0121	4	54	Sheave	10-0035	1
10	Washer	28-0022	8	34	Locknut	30-0159	4	55	Gun/Wand Assembly (Inc. 56-61)	851-0095	1
11	Bolt	27-9524	7	35	Beltguard Back	6-0106	1	56	Quick Connect Plug	17-0005	1
12	Rear Handle	7-0183	1	36	Edging *(Two Feet Required)	33-0433	1	57	Trigger Gun	16-0001	1
13	Bolt	27-0067	16	37	Decal- Warning/Caution (See 34-9017)	N/A Sep.	1	58	Wand Grip	7-0002	1
14	Axle Bracket	20-0864A01	1	38	Decal- Warning: Beltguard in Place (See 34-9017)	N/A Sep.	1	59	Wand	16-0120A01	1
15	Jam Nut	30-0117	2	39	Drive Belt	11-0031	2	60	Decal- Warning: Risk of Injection (See 34-9017)	N/A Sep.	1
16	Wheel	14-0006	2	40	Sheave	10-0074	1	61	Quick Connect Socket	17-0001	1
17	Baseplate	5-0222	1	41	Bushing	9-0005	1	62	O-ring	25-0122	1
18	Support Bracket	56-0054	1	42	Bolt	27-0015	4	63	Hose Assembly (Inc. 28, 64-65)	851-0007	1
19	Isolator	14-0008	2	43	Edging *(Four Feet Required)	33-0433	1	64	Quick Connect Plug	17-0006	1
20	Bolt	27-0068	2	44	Beltguard Cover	6-0107	1	65	Hose	15-0003	1
21	Front Handle	7-018201	1	45	Bolt	27-8898	2		Safety Decal Kit (Inc. 2-3, 37-38, 46, 60)	34-9017	
22	Bolt	27-0576	1	46	Decal- Operation (See 34-9017)	N/A Sep.	1	*Must Order in One Foot Lengths			
23	Tension Bracket	21-0218	1	47	Nozzle- 0004.5	18-0033	1				

PUMP ASSEMBLY (3-0268)

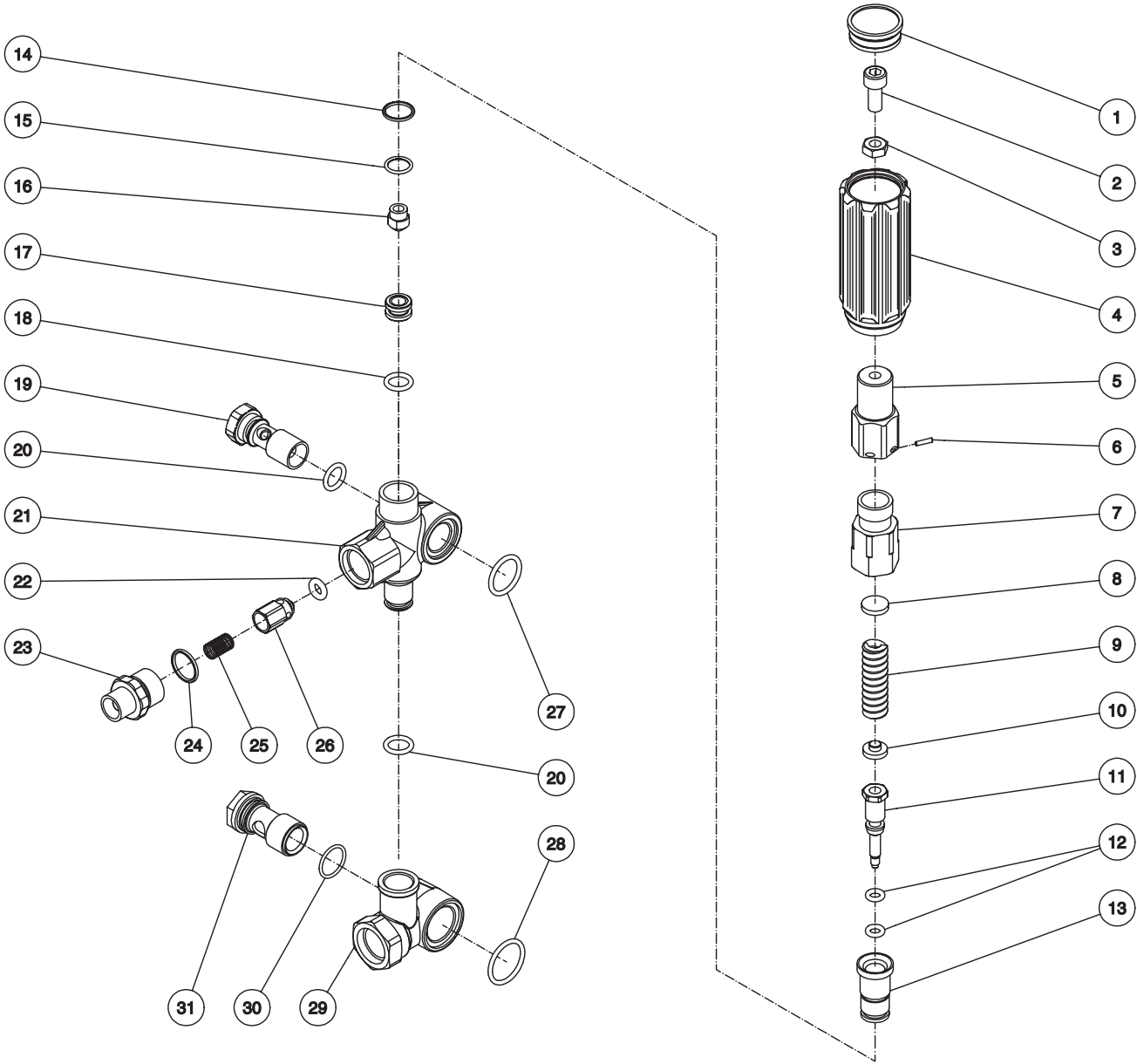


3-0268-100708-CH

PUMP ASSEMBLY (3-0268)

REF. #	DESCRIPTION	PART #	QTY.	REF. #	DESCRIPTION	PART #	QTY.	REF. #	DESCRIPTION	PART #	QTY.
1	Screw	27-8884	8	18	Piston Pin	46-0698	3	35	O-ring	25-0386	6
2	Pump Shaft	46-0691	1	19	Plunger Rod	46-0699	3	36	Unloader	8-0533	1
3	Oil Seal	26-0188	1	20	Washer	46-0700	3	37	Lockwasher	29-0154	8
4	O-ring	25-0380	2	21	Back Ring	25-0404	3	38	Screw	27-8440	8
5	Bearing	48-0061	2	22	O-ring	25-0382	3	39	Manifold	46-1186	1
6	Crankshaft	46-1103	1	23	Piston	46-0701	3	40	Support Ring (See 70-0178)	N/A Sep.	3
7	Key	43-0091	1	24	Washer / Gasket	26-0191	3	41	V-Packing (See 70-0177)	N/A Sep.	3
8	Plug	39-0086	1	25	Nut	30-6020	3	42	Packing Retainer	46-0708	3
9	O-ring	25-0325	1	26	Oil Dipstick	39-0090	1	43	Low Pressure Seal (See 70-0177)	N/A Sep.	3
10	Screw	27-8885	6	27	Pump Crankcase	46-1198	1	44	O-ring	25-0384	3
11	Pump	46-0719	1	28	Bearing	46-0072	1	45	Oil Seal	46-0931	3
12	O-ring	25-0370	1	29	Shim - 0.2mm (Qty. vaires 1-3)	46-0705	1		High Pressure Seals Kit (Inc. 3 each 41, 43, 44)	70-0177	
13	Oil Sight Glass	46-0670	1	30	Shim - 0.1mm (Qty. vaires 1-3)	46-0704	1		Support Ring Kit (Inc. 3 each 40)	70-0178	
14	Oil Reflector	46-0824	1	31	Bearing Cap	46-0703	1		Valve Kit (Inc. 6 each 34, 35)	70-0319	
15	Spring Retainer	46-0671	1	32	Valve Cap	39-0095	6		Oil Seals Kit (Inc. 3, 4, 16, 45)	70-0321	
16	O-ring	25-0398	1	33	O-ring	25-0160	6		Piston Kit (Inc. 3 each 20-25)	70-0352	
17	Connecting Rod	46-0896	3	34	Complete Valve Assembly (See 70-0319)	N/A Sep.	6				

UNLOADER ASSEMBLY (8-0533)



8-0533-102104-JJF

UNLOADER ASSEMBLY (8-0533)

REF. #	DESCRIPTION	PART #	QTY.	REF. #	DESCRIPTION	PART #	QTY.
1	Unloader Cap	7-0142	1	17	Seat	8-0529	1
2	Screw	27-8433	1	18	O-ring	25-0527	1
3	Nut	30-3025	1	19	Bolt	8-0531	1
4	Unloader Knob	7-0141	1	20	O-ring	25-0388	2
5	Unloader	8-0476	1	21	Unloader Body	8-0530	1
6	Unloader Pin	8-0478	1	22	O-ring	25-0437	1
7	Spring Guide	8-0523	1	23	Adapter Nipple	24-0159	1
8	Upper Plate	8-0524	1	24	O-ring	25-0372	1
9	Unloader Spring	49-0132	1	25	Unloader Check Valve Spring	49-0123	1
10	Lower Plate	8-0525	1	26	Unloader Check Valve	8-0454	1
11	Piston	8-0526	1	27	O-ring	25-0528	1
12	O-ring	25-0526	2	28	O-ring	25-0519	1
13	Piston Guide	8-0527	1	29	Bypass Housing	8-0532	1
14	O-ring	25-0510	1	30	O-ring	25-0389	1
15	O-ring	25-0407	1	31	Bolt	8-0517	1
16	Bypass Jet	8-0528	1		Unloader Repair Kit (Inc. 12, 14-15, 18, 20, 22, 24, 27, 28, 30)	70-0341	